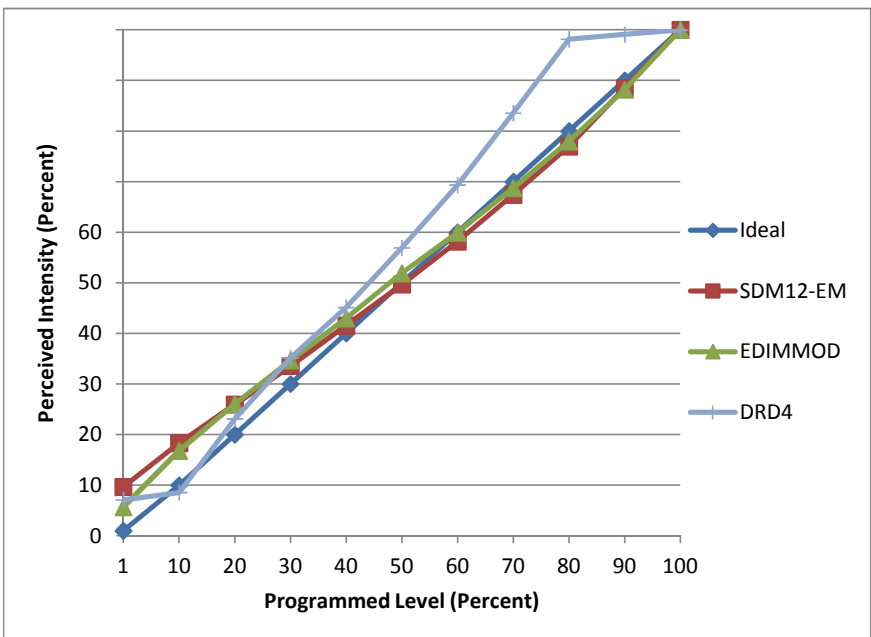


Manufacturer Juno
Model IC1LEDG4
Description 4" LED Downlight
Driver integrated
Nominal Power (W) 11.7
Dimming Control Forward- and Reverse-phase
Product Range G4
Test Date 11/7/2014

Dimmer Tested Against:	SDM12-EM	EDIMMOD	DRD4
Pass/Fail	Pass	Pass	Pass
Best-Fit Power Profile:			Standard
Minimum ON	6	1.5	8
Maximum ON	71	65	
Adjust	40	65	
Light Output Range (vs. non-dimmed)			
Maximum (Perceived)	95.5%	95.7%	100.0%
Minimum (Perceived)	9.2%	5.4%	7.1%
Minimum (Measured)	0.9%	0.3%	0.5%

Linearity Curves (Best-fit Power Profile Applied):



Observations: