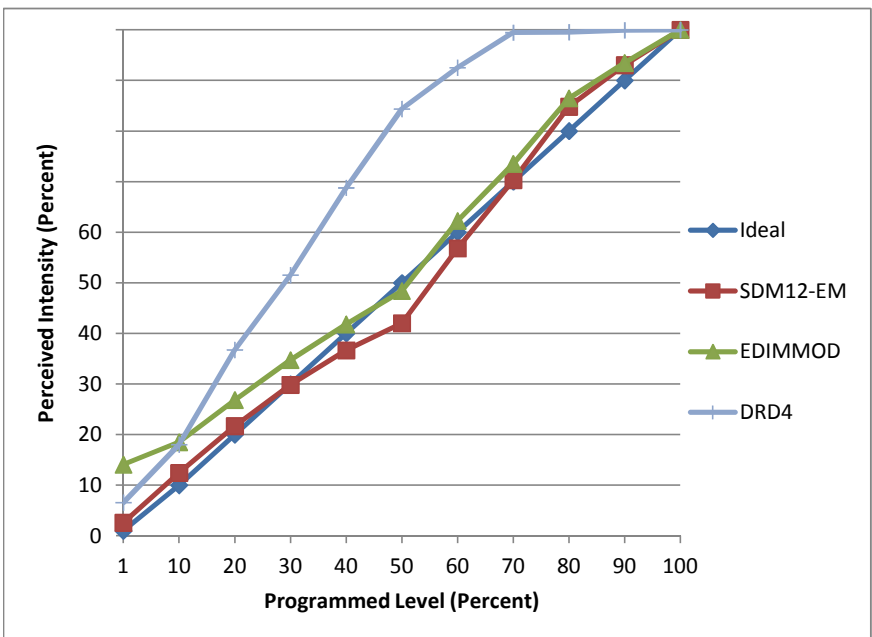


Manufacturer Juno
Model IC1LWDG4-3K-1
Description 4" LED Downlight
Driver integrated
Nominal Power (W) 14.2
Dimming Control Forward- and reverse-phase
Product Range
Test Date 9/30/2014

Dimmer Tested Against:	SDM12-EM	EDIMMOD	DRD4
Pass/Fail	Pass	Pass	Pass
Best-Fit Power Profile:			Standard
Minimum ON	4	2.5	8
Maximum ON	57	50	
Adjust	90	100	
Light Output Range (vs. non-dimmed)			
Maximum (Perceived)	95.5%	95.4%	100.0%
Minimum (Perceived)	2.5%	13.4%	6.6%
Minimum (Measured)	0.1%	1.8%	0.4%

Linearity Curves (Best-fit Power Profile Applied):



Observations: