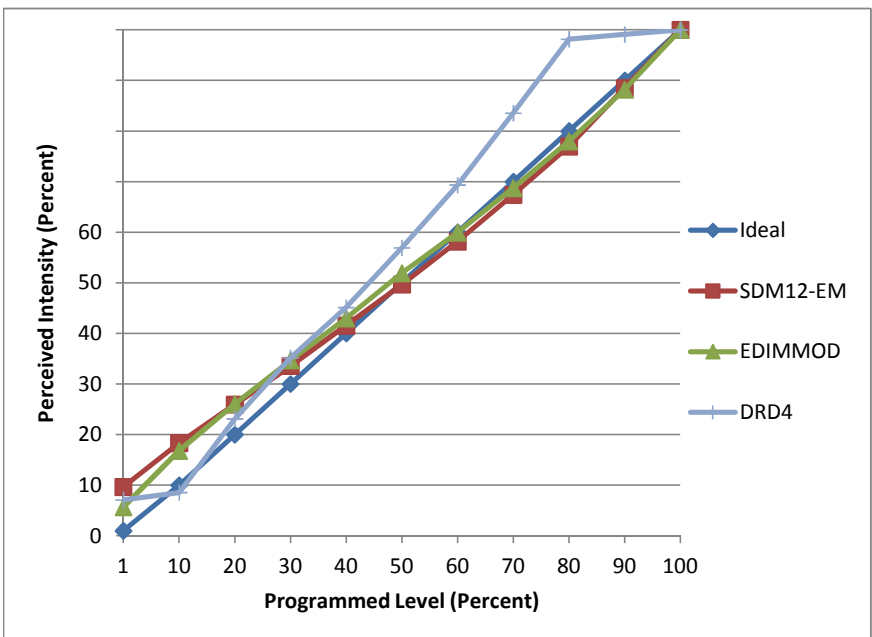


**Manufacturer** Juno  
**Model** IC1LEDG4  
**Description** 4" LED Downlight  
**Driver** integrated  
**Nominal Power (W)** 11.7  
**Dimming Control** Forward- and Reverse-phase  
**Product Range** G4  
**Test Date** 11/7/2014

Dimmer Tested Against:	SDM12-EM	EDIMMOD	DRD4
Pass/Fail	Pass	Pass	Pass
Best-Fit Power Profile:			Standard
Minimum ON	6	1.5	8
Maximum ON	71	65	
Adjust	40	65	
Light Output Range (vs. non-dimmed)			
Maximum (Perceived)	95.5%	95.7%	100.0%
Minimum (Perceived)	9.2%	5.4%	7.1%
Minimum (Measured)	0.9%	0.3%	0.5%

Linearity Curves (Best-fit Power Profile Applied):



Observations: