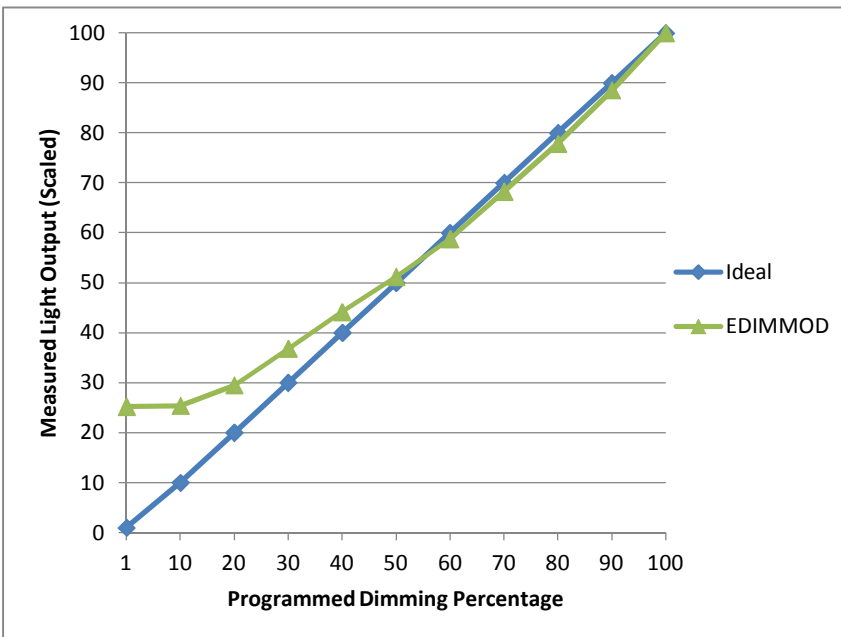


Manufacturer Cooper Lighting - Iris brand
Model P3LEDXXXXX-1E0-10V/TE
Description LED Recessed Can with E3MR Optical Element
Driver Integral 1E 0-10V/TE
Nominal Power (W) 20.4
Dimming Control Reverse-phase
Product Range
Test Date 3/26/2013

Dimmer Tested Against:	EDIMMOD		
Pass/Fail	Pass		
Best-Fit Power Profile:			
Minimum ON	5		
Maximum ON	80		
Adjust	90		
Light Output Range (vs. non-dimmed)			
Maximum (Perceived)	99.5%		
Minimum (Perceived)	25.1%		
Minimum (Measured)	6.3%		

Linearity Curves (Best-fit Power Profile Applied):

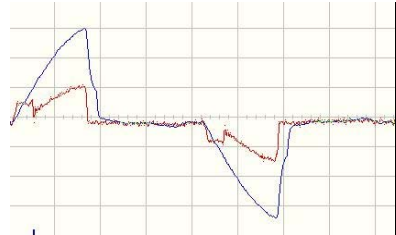


Reverse-phase

100% Dim Level Waveform Capture



50% Dim Level Waveform Capture



Observations:

This driver is adaptive. It auto-detects reverse-phase dimming and will enable itself to be dimmed thereby.
 Driver also supports 0-10VDC.
 It would appear that driver needs to be dimmed and cycled a few times before it becomes stable and settled.