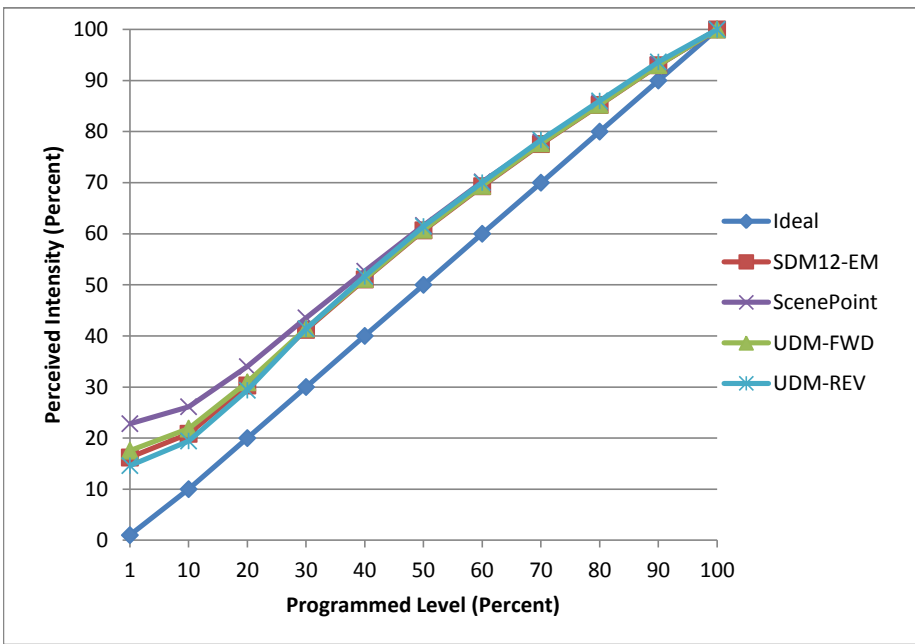


**Manufacturer** Intense Lighting  
**Model** MXHG2L0309-DIMW-12  
**Description** Track Light  
**Driver** Integrated  
**Nominal Power (W)** 10  
**Dimming Control** Forward and Reverse  
**Product Range** -  
**Test Date** 1/31/2017

Dimmer Tested Against:	SDM12-EM	Scenepoint	UDM-FWD	UDM-REV
Pass/Fail	Pass	Pass	Pass	Pass
<b>Best-Fit Power Profile:</b>				
Minimum ON	2	3	2	2
Maximum ON	66	67	67	66
Adjust	100	100	100	100
<b>Light Output Range (vs. non-dimmed)</b>				
Maximum (Perceived)	95.1%	95.4%	95.6%	95.5%
Minimum (Perceived)	15.4%	21.8%	16.8%	14.0%
Minimum (Measured)	2.4%	4.7%	2.8%	1.9%

Linearity Curves (Best-fit Power Profile Applied):



Observations:

bgk