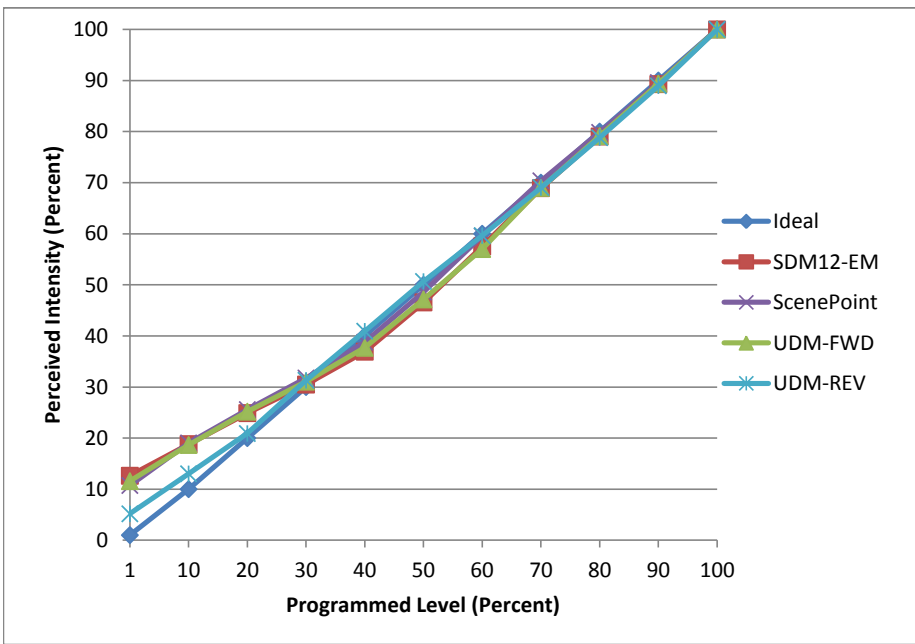


**Manufacturer** Halo  
**Model** RA406930WHR  
**Description** 4in Retrofit  
**Driver** Integrated  
**Nominal Power (W)** 10  
**Dimming Control** Forward and Reverse  
**Product Range** -  
**Test Date** 4/10/2017

Dimmer Tested Against:	SDM12-EM	Scenepoint	UDM-FWD	UDM-REV
Pass/Fail	Pass	Pass	Pass	Pass
<b>Best-Fit Power Profile:</b>				
Minimum ON	4	4	4	7
Maximum ON	82	85	82	82
Adjust	70	55	65	60
<b>Light Output Range (vs. non-dimmed)</b>				
Maximum (Perceived)	95.9%	95.9%	95.3%	95.3%
Minimum (Perceived)	12.1%	10.3%	11.0%	4.9%
Minimum (Measured)	1.5%	1.1%	1.2%	0.2%

**Linearity Curves (Best-fit Power Profile Applied):**



**Observations:**

bgk