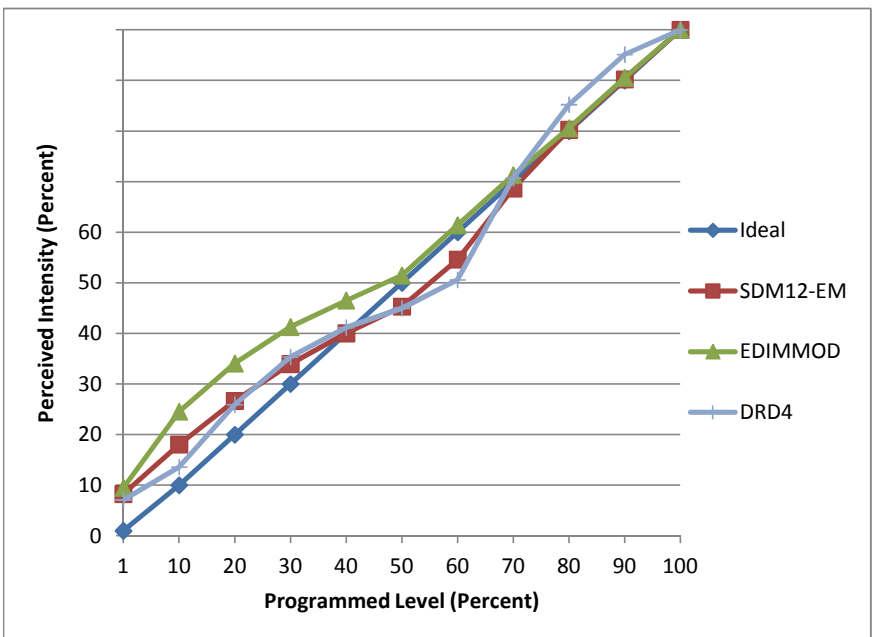


**Manufacturer** Cooper Halo  
**Model** ML560  
**Description** 5" - 6" Downlight module  
**Driver** integrated  
**Nominal Power (W)** 13.4  
**Dimming Control** Forward-phase and reverse-phase  
**Product Range**  
**Test Date** 7/2/2014

Dimmer Tested Against:	SDM12-EM	EDIMMOD	DRD4
Pass/Fail	pass	pass	pass
Best-Fit Power Profile:			standard
Minimum ON	3	1	
Maximum ON	90	92	
Adjust	50	50	
Light Output Range (vs. non-dimmed)			
Maximum (Perceived)	96.4%	95.0%	100.0%
Minimum (Perceived)	8.0%	9.0%	7.1%
Minimum (Measured)	0.6%	0.8%	0.5%

Linearity Curves (Best-fit Power Profile Applied):



**Observations:**

Single sample only tested; single fixture flickers on ScenePoint dimmer.  
 DRD4 minimum reliable programmed dim: 6%  
 Mild flicker observed on electronic dimmer at low dim levels.