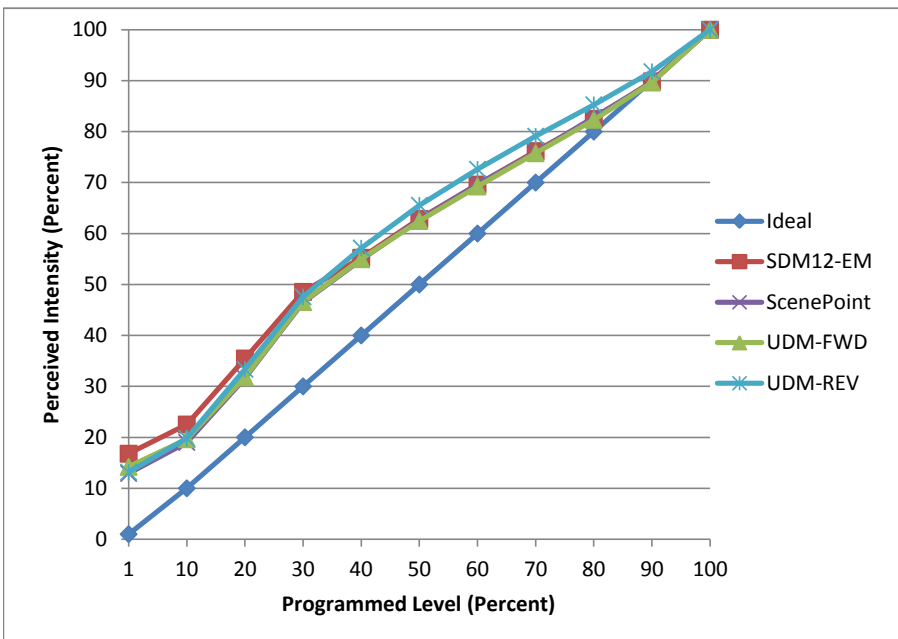


Manufacturer Halco
Model PAR30FL10L 927 W LED
Description PAR 30 L Lamp
Driver Integrated
Nominal Power (W) 10
Dimming Control Forward and Reverse Phase
Product Range -
Test Date 9/12/2017

Dimmer Tested Against:	SDM12-EM	ScenePoint	UDM-FWD	UDM-REV
Pass/Fail	Pass	Pass	Pass	Pass
Best-Fit Power Profile:				
Minimum ON	2	2	2	2
Maximum ON	93	94	94	93
Adjust	100	100	100	100
Light Output Range (vs. non-dimmed)				
Maximum (Perceived), 120V	95.5%	95.1%	95.4%	95.2%
Minimum (Perceived)	16.0%	12.3%	13.6%	12.5%
Minimum (Measured)	2.6%	1.5%	1.8%	1.6%

Linearity Curves (Best-fit Power Profile Applied):



Observations:

bgk