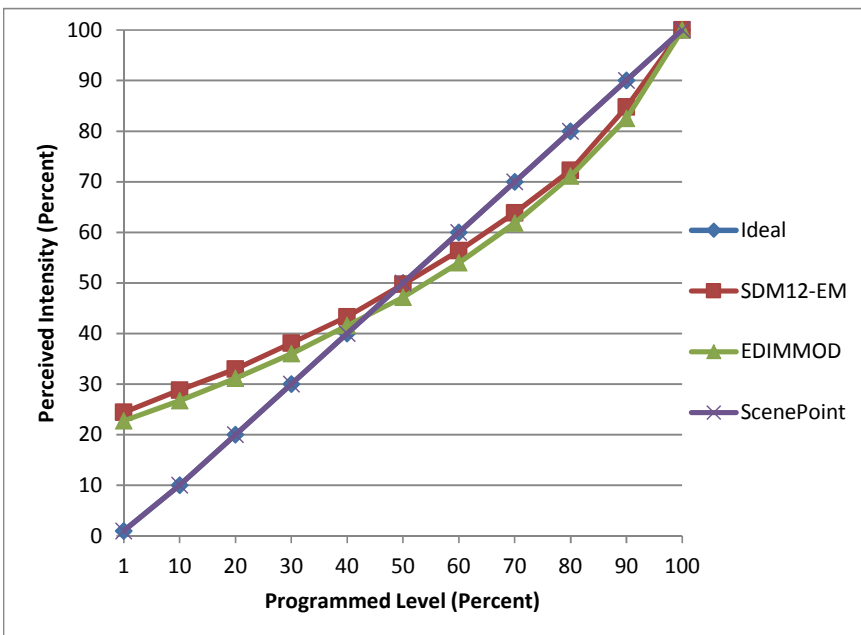


Manufacturer HY LED
Model YG-DPAR20-6W
Description Par20 lamp
Driver integrated
Nominal Power (W) 6
Dimming Control forward- and reverse-phase
Product Range
Test Date 2/16/2016

Dimmer Tested Against:	SDM12-EM	EDIMMOD	ScenePoint
Pass/Fail	Pass	Pass	*
Best-Fit Power Profile:			
Minimum ON	14	10	
Maximum ON	48	45	
Adjust	50	60	
Light Output Range (vs. non-dimmed)			
Maximum (Perceived)	95.3%	95.1%	100.0%
Minimum (Perceived)	23.3%	21.7%	1.0%
Minimum (Measured)	5.4%	4.7%	0.0%

Linearity Curves (Best-fit Power Profile Applied):



Observations:

*Single sample only was provided and there appear to be minimum load concerns. Would require multiple lamps to test conclusively.