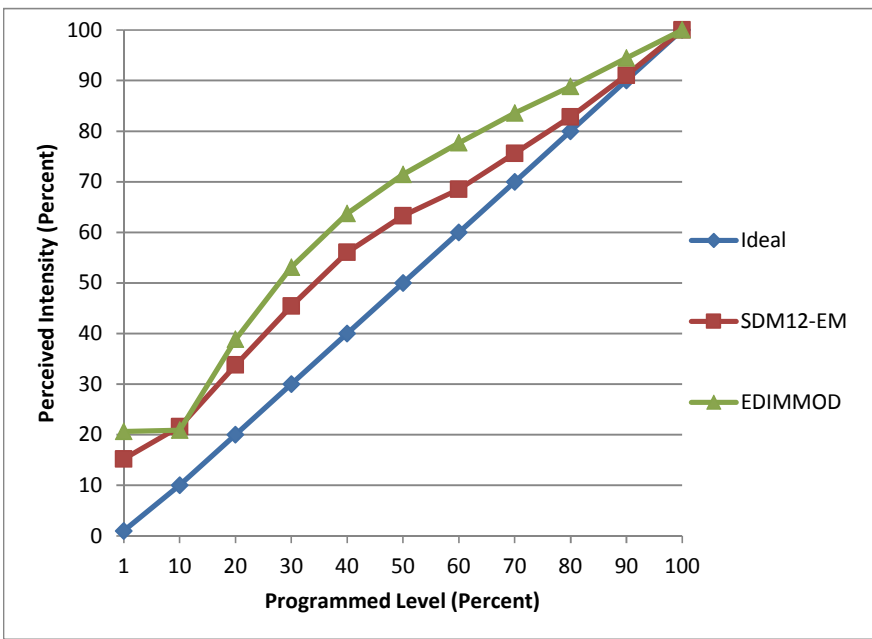


Manufacturer Green Creative
Model BR40-E26-9W-2700K
Description BR40 LED Lamp
Driver integrated
Nominal Power (W) 9
Dimming Control forward- and reverse-phase
Product Range Titanium LED Series 4.0
Test Date 11/10/2015

Dimmer Tested Against:	SDM12-EM	EDIMMOD	
Pass/Fail	Pass	Pass	
Best-Fit Power Profile:			
Minimum ON	2	0	
Maximum ON	92	72	
Adjust	100	100	
Light Output Range (vs. non-dimmed)			
Maximum (Perceived)	95.1%	95.0%	
Minimum (Perceived)	14.5%	19.6%	
Minimum (Measured)	2.1%	3.8%	

Linearity Curves (Best-fit Power Profile Applied):



Observations:

Compatible with ScenePoint dimmer, with power profile parameters of SDM but for Minimum On of 3.