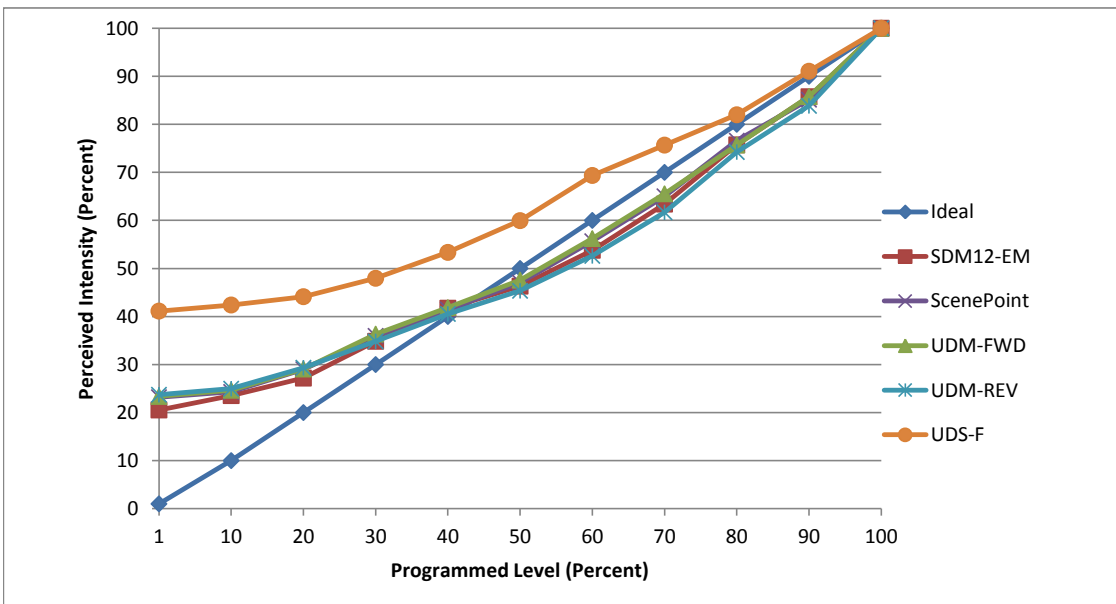


Manufacturer Glimmer Lighting
Model GLK-7PAR16-3036
Description Lamp
Driver Integrated
Nominal Power (W) 7
Dimming Control Forward and Reverse Phase
Product Range -
Test Date 9/25/2017

Dimmer Tested Against:	SDM12-EM	SCP	UDM-FWD	UDM-REV	UDS-F	UDS-R
Pass/Fail	Pass	Pass	Pass	Pass	Pass	Fail
Best-Fit Power Profile:						
Minimum ON	3	4	4	7	7	-
Maximum ON	77	78	77	80	60	-
Adjust	100	100	100	100	100	-
Light Output Range (vs. non-dimmed)						
Maximum (Perceived), 120V	95.8%	95.9%	95.8%	95.8%	95.9%	95.0%
Minimum (Perceived)	19.7%	22.2%	22.4%	22.7%	39.5%	0.3%
Minimum (Measured)	3.9%	4.9%	5.0%	5.2%	15.6%	0.0%

Linearity Curves (Best-fit Power Profile Applied):



Observations:

Transistional Stepping
 On UDS-R Light does not dim until 20% then drops low
 would need more samples to determine why
 bgk