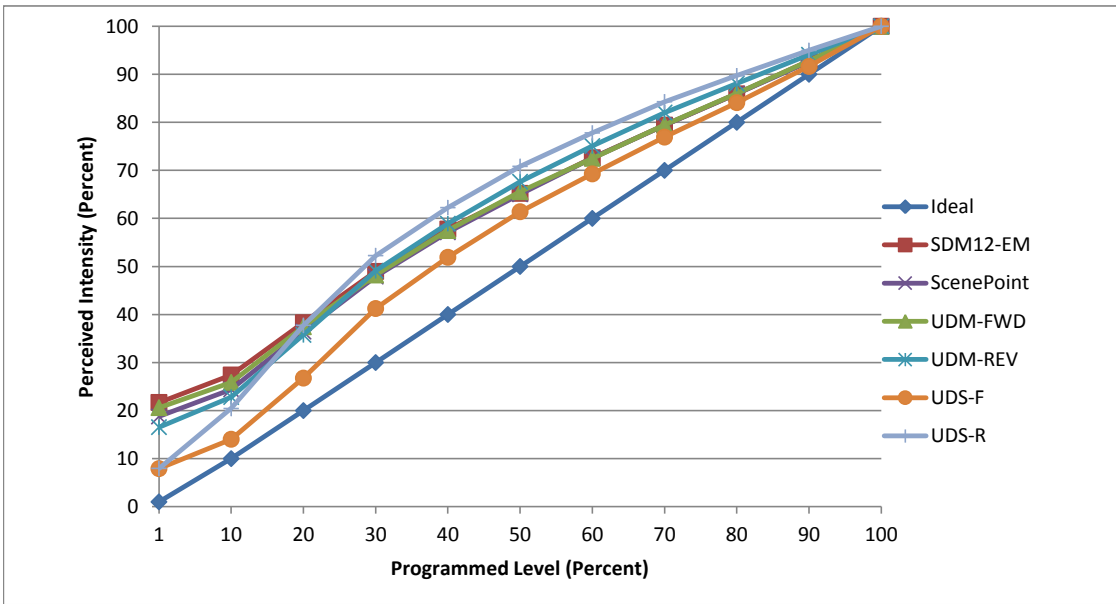


Manufacturer Glimmer Lighting
Model GLK-7GU10-3038-V2
Description GU10
Driver Integrated
Nominal Power (W) 7
Dimming Control Forward and Reverse Phase
Product Range -
Test Date 11/20/2017

Dimmer Tested Against:	SDM12-EM	SCP	UDM-FWD	UDM-REV	UDS-F	UDS-R
Pass/Fail	Pass	Pass	Pass	Pass	Pass	Pass
Best-Fit Power Profile:						
Minimum ON	3	3	3	3	3	1
Maximum ON	76	77	75	67	81	58
Adjust	100	100	100	100	100	100
Light Output Range (vs. non-dimmed)						
Maximum (Perceived), 120V	95.2%	95.5%	95.3%	95.1%	95.3%	95.0%
Minimum (Perceived)	20.7%	17.9%	19.7%	15.7%	7.5%	7.6%
Minimum (Measured)	4.3%	3.2%	3.9%	2.5%	0.6%	0.6%

Linearity Curves (Best-fit Power Profile Applied):



Observations:

bgk