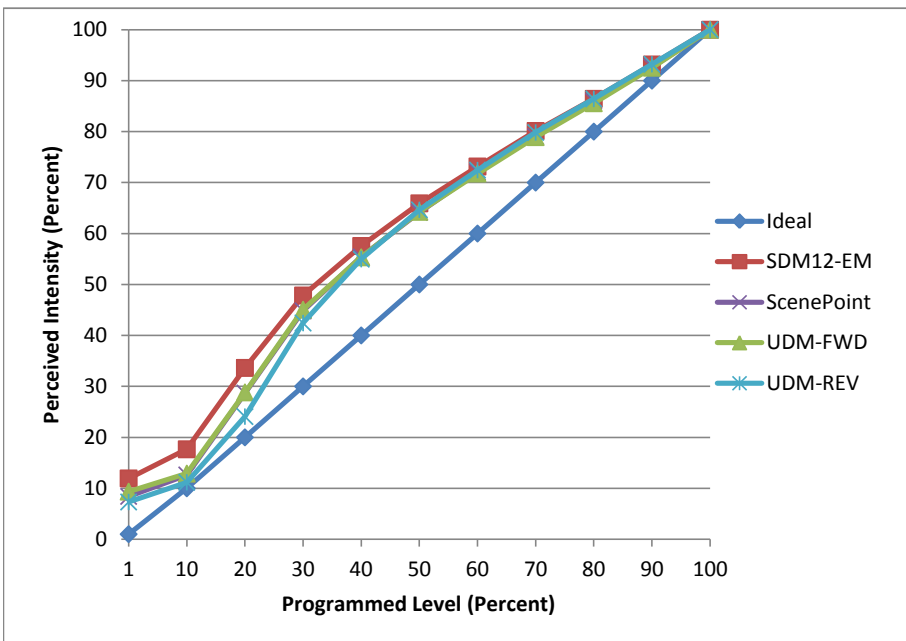


Manufacturer Glimmer Lighting
Model GLK-20PAR38-3038
Description Par 38 Lamp
Driver Integrated
Nominal Power (W) 20
Dimming Control Forward and Reverse Phase
Product Range -
Test Date 8/15/2017

Dimmer Tested Against:	SDM12-EM	ScenePoint	UDM-FWD	UDM-REV
Pass/Fail	Pass	Pass	Pass	Pass
Best-Fit Power Profile:				
Minimum ON	2	2	2	2
Maximum ON	75	78	78	74
Adjust	100	100	100	100
Light Output Range (vs. non-dimmed)				
Maximum (Perceived), 120V	95.3%	95.4%	95.4%	95.0%
Minimum (Perceived)	11.4%	8.0%	8.9%	6.9%
Minimum (Measured)	1.3%	0.6%	0.8%	0.5%

Linearity Curves (Best-fit Power Profile Applied):



Observations:

bgk