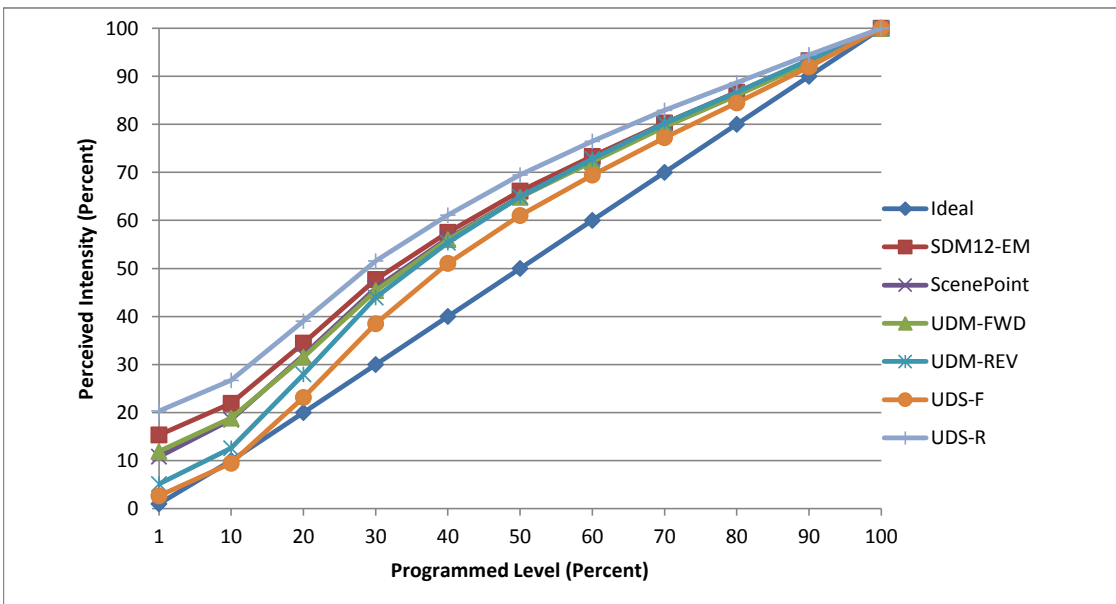


Manufacturer Glimmer Lighting
Model GLK-15PAR30-3038
Description PAR 30 Lamp
Driver Integrated
Nominal Power (W) 15
Dimming Control Forward and Reverse Phase
Product Range -
Test Date 9/20/2017

Dimmer Tested Against:	SDM12-EM	SCP	UDM-FWD	UDM-REV	UDS-F	UDS-R
Pass/Fail	Pass	Pass	Pass	Pass	Pass	Pass
Best-Fit Power Profile:						
Minimum ON	2	2	2	2	2	2
Maximum ON	73	75	75	73	80	66
Adjust	100	100	100	100	100	100
Light Output Range (vs. non-dimmed)						
Maximum (Perceived), 120V	95.0%	95.0%	95.1%	95.4%	95.2%	95.3%
Minimum (Perceived)	14.6%	10.3%	11.3%	4.9%	2.5%	19.4%
Minimum (Measured)	2.1%	1.1%	1.3%	0.2%	0.1%	3.8%

Linearity Curves (Best-fit Power Profile Applied):



Observations:

bgk