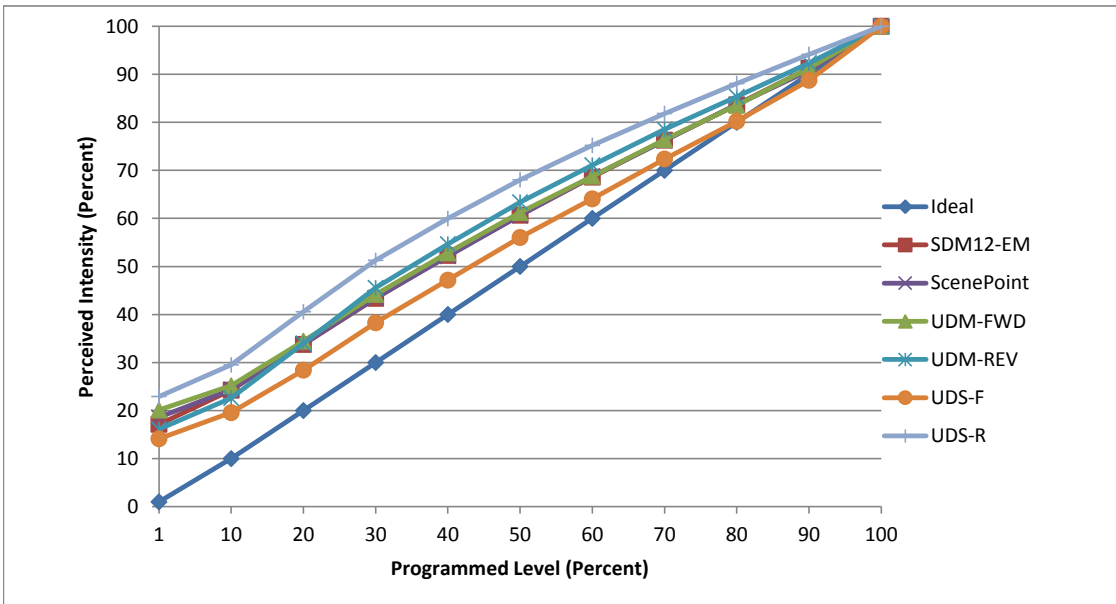


**Manufacturer** Glimmer Lighting  
**Model** GLB-9A19-30K  
**Description** A19  
**Driver** Integrated  
**Nominal Power (W)** 9  
**Dimming Control** Forward and Reverse Phase  
**Product Range** -  
**Test Date** 11/20/2017

Dimmer Tested Against:	SDM12-EM	SCP	UDM-FWD	UDM-REV	UDS-F	UDS-R
Pass/Fail	Pass	Pass	Pass	Pass	Pass	Pass
<b>Best-Fit Power Profile:</b>						
Minimum ON	1	1	1	1	1	1
Maximum ON	93	95	94	94	97	88
Adjust	100	100	100	100	100	100
<b>Light Output Range (vs. non-dimmed)</b>						
Maximum (Perceived), 120V	95.1%	95.1%	95.0%	95.2%	95.2%	95.0%
Minimum (Perceived)	16.3%	17.7%	19.1%	15.3%	13.5%	21.8%
Minimum (Measured)	2.7%	3.1%	3.7%	2.4%	1.8%	4.7%

Linearity Curves (Best-fit Power Profile Applied):



**Observations:**

bgk