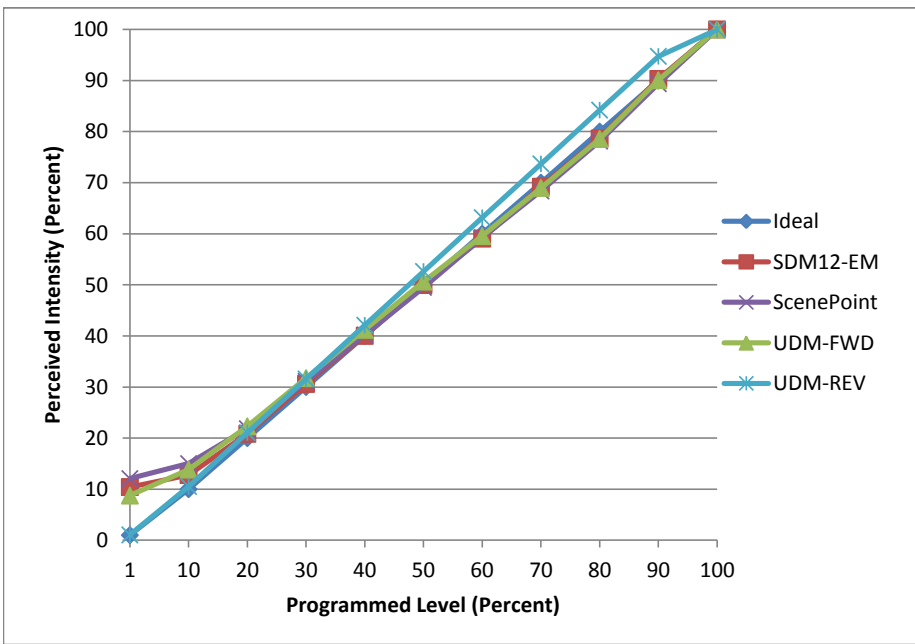


**Manufacturer** Futura Lighting  
**Model** UL-RBL-NW  
**Description** Tape Light  
**Driver** FL-100W-12V-LED-DIM  
**Nominal Power (W)** 24  
**Dimming Control** Forward and Reverse  
**Product Range** -  
**Test Date** 5/16/2017

Dimmer Tested Against:	SDM12-EM	Scenepoint	UDM-FWD	UDM-REV
Pass/Fail	Pass	Pass	Pass	Fail
<b>Best-Fit Power Profile:</b>				
Minimum ON	3	4	3	
Maximum ON	81	84	85	
Adjust	100	100	90	
<b>Light Output Range (vs. non-dimmed)</b>				
Maximum (Perceived)	95.3%	94.7%	95.8%	95.0%
Minimum (Perceived)	9.9%	11.4%	8.4%	1.0%
Minimum (Measured)	1.0%	1.3%	0.7%	0.0%

**Linearity Curves (Best-fit Power Profile Applied):**



**Observations:**

bgk