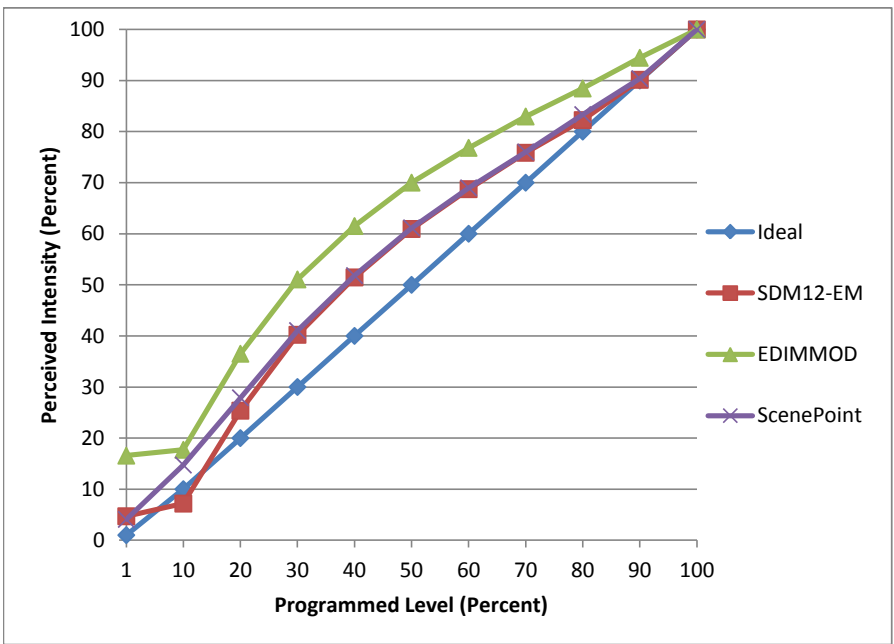


Manufacturer FEIT Electric
Model PAR30L/LEDG6/2
Description PAR30 Lamp
Driver Integrated
Nominal Power (W) 12
Dimming Control Forward and Reverse
Product Range
Test Date 9/11/2015

Dimmer Tested Against:	SDM12-EM	EDIMMOD	Scenepoint
Pass/Fail	Pass	Pass	Pass
Best-Fit Power Profile:			
Minimum ON	0	0	1
Maximum ON	93	87	93
Adjust	100	100	100
Light Output Range (vs. non-dimmed)			
Maximum (Perceived)	95.2%	95.4%	16.7%
Minimum (Perceived)	4.5%	15.8%	95.1%
Minimum (Measured)	0.2%	2.5%	0.2%

Linearity Curves (Best-fit Power Profile Applied):



Observations: