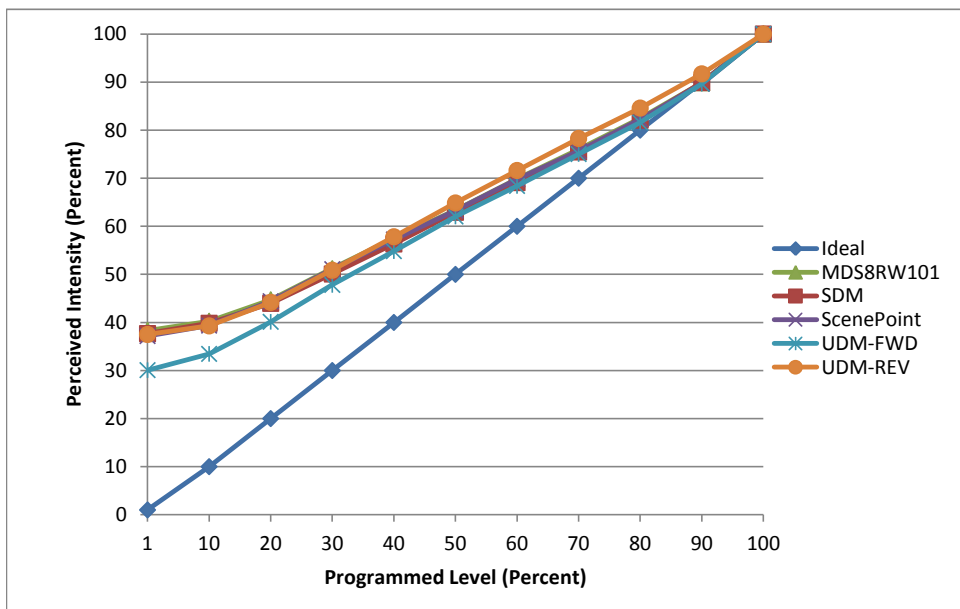


Manufacturer FEIT
Model CEOM40 927 3
Description A21 Lamp
Driver Integrated
Nominal Power (W) 7
Dimming Control Forward and Reverse
Product Range -
Test Date 10/13/2016

Dimmer Tested Against:	MDS8RW101	SDM12-EM	ScenePoint	UDM-FWD	UDM-REV
Pass/Fail	Pass	Pass	Pass	Pass	Pass
Best-Fit Power Profile:					
Minimum ON	15	15	15	13	15
Maximum ON	81	81	82	82	76
Adjust	100	100	100	100	100
Light Output Range (vs. non-dimmed)					
Maximum (Perceived)	95.3%	95.3%	95.3%	95.2%	95.7%
Minimum (Perceived)	36.5%	35.9%	35.4%	28.6%	35.9%
Minimum (Measured)	13.3%	12.9%	12.6%	8.2%	12.9%

Linearity Curves (Best-fit Power Profile Applied):



Observations:

Minimum Load issue Unable to confirm minimum due to lack of samples.

bgk