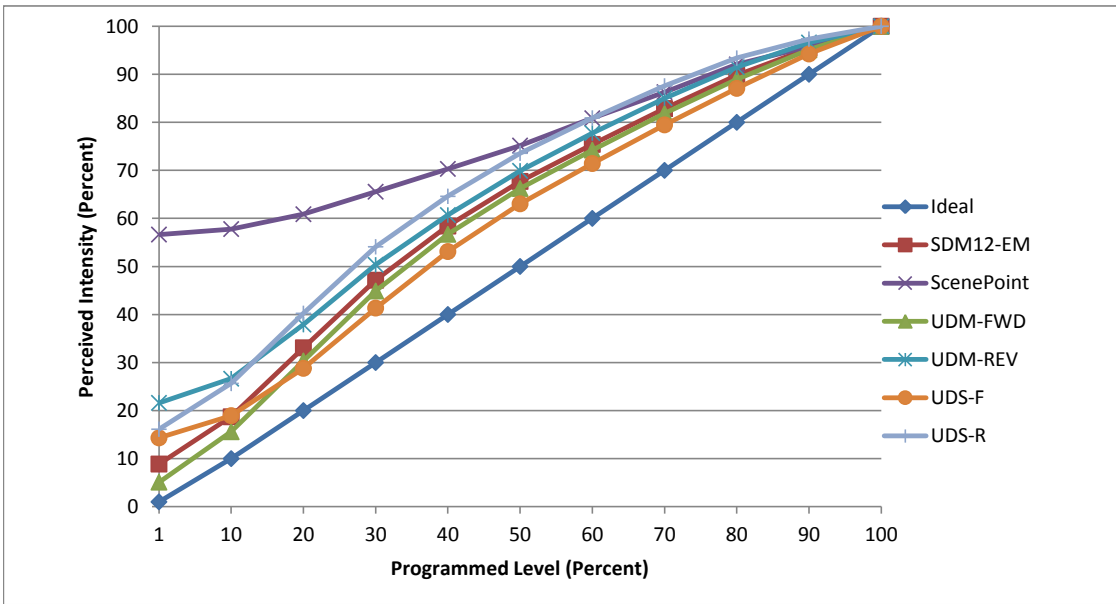


Manufacturer Feit
Model 1057864
Description Retrofit 5-6 in
Driver Integrated
Nominal Power (W) 14
Dimming Control Forward and Reverse Phase
Product Range -
Test Date 10/2/2017

Dimmer Tested Against:	SDM12-EM	SCP	UDM-FWD	UDM-REV	UDS-F	UDS-R
Pass/Fail	Pass	Pass	Pass	Pass	Pass	Pass
Best-Fit Power Profile:						
Minimum ON	1	15	1	3	3	1
Maximum ON	87	87	88	83	93	75
Adjust	100	100	100	100	100	100
Light Output Range (vs. non-dimmed)						
Maximum (Perceived), 120V	95.1%	95.0%	95.1%	95.1%	95.7%	95.1%
Minimum (Perceived)	8.4%	53.8%	4.9%	20.6%	13.7%	15.3%
Minimum (Measured)	0.7%	29.0%	0.2%	4.2%	1.9%	2.3%

Linearity Curves (Best-fit Power Profile Applied):



Observations:

bgk