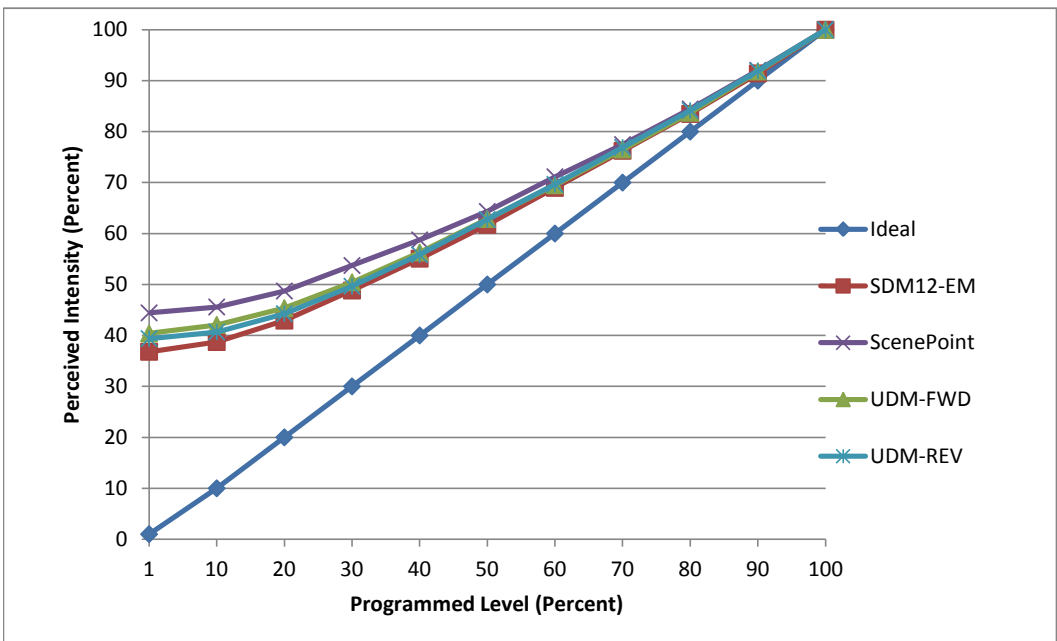


Manufacturer Emery Allen
Model EA-B10-5W-2780-D
Description Candelabra
Driver Integrated
Nominal Power (W) 5
Dimming Control Forward and Reverse Phase
Product Range -
Test Date 9/25/2017

Dimmer Tested Against:	SDM12-EM	SCP	UDM-FWD	UDM-REV
Pass/Fail	Pass	Pass	Pass	Pass
Best-Fit Power Profile:				
Minimum ON	20	25	23	23
Maximum ON	70	75	76	73
Adjust	100	100	100	100
Light Output Range (vs. non-dimmed)				
Maximum (Perceived), 120V	95.2%	95.2%	95.6%	95.4%
Minimum (Perceived)	35.0%	42.3%	38.6%	37.6%
Minimum (Measured)	12.3%	17.9%	14.9%	14.1%

Linearity Curves (Best-fit Power Profile Applied):



Observations:

bgk