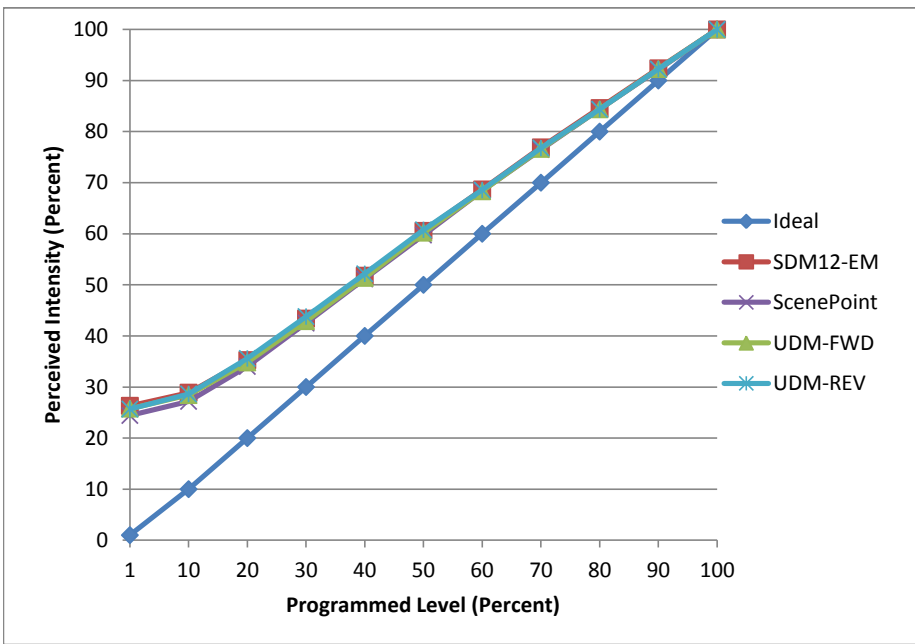


Manufacturer Elite
Model RL407-650L-DIMTR-120-30K-90-SN-SN
Description 4 in Recessed
Driver EBR010W-0250-42
Nominal Power (W) 10.5
Dimming Control Forward and Reverse
Product Range -
Test Date 11/28/2016

Dimmer Tested Against:	SDM12-EM	Scenepoint	UDM-FWD	UDM-REV
Pass/Fail	Pass	Pass	Pass	Pass
Best-Fit Power Profile:				
Minimum ON	5	5	5	5
Maximum ON	72	73	72	71
Adjust	100	100	100	100
Light Output Range (vs. non-dimmed)				
Maximum (Perceived)	95.4%	95.6%	95.1%	95.6%
Minimum (Perceived)	25.1%	23.3%	24.5%	24.6%
Minimum (Measured)	6.3%	5.5%	6.0%	6.0%

Linearity Curves (Best-fit Power Profile Applied):



Observations:

bgk