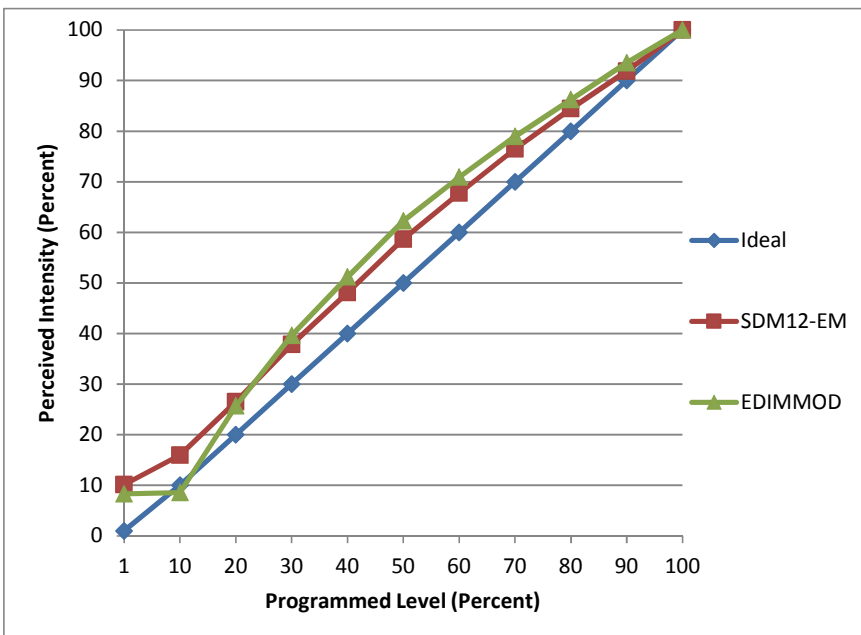


Manufacturer Element
Model EMT-12LLH9304-AN-ELV 120B
Description Dual lamp recessed fixture
Driver L.T.F. DA18W440C40BF-0000
Nominal Power (W) 18.7
Dimming Control forward- and reverse-phase
Product Range 1x2 Multiples
Test Date 6/1/2015

Dimmer Tested Against:	SDM12-EM	EDIMMOD	
Pass/Fail	Pass	Pass	
Best-Fit Power Profile:			
Minimum ON	2	0	
Maximum ON	71	65	
Adjust	100	100	
Light Output Range (vs. non-dimmed)			
Maximum (Perceived)	95.1%	95.4%	
Minimum (Perceived)	9.7%	7.9%	
Minimum (Measured)	0.9%	0.6%	

Linearity Curves (Best-fit Power Profile Applied):



Observations:

While the manufacturer states that this is electronic low-voltage dimming, the driver states compatibility with both forward- and reverse-phase dimmers, so testing was conducted with both.