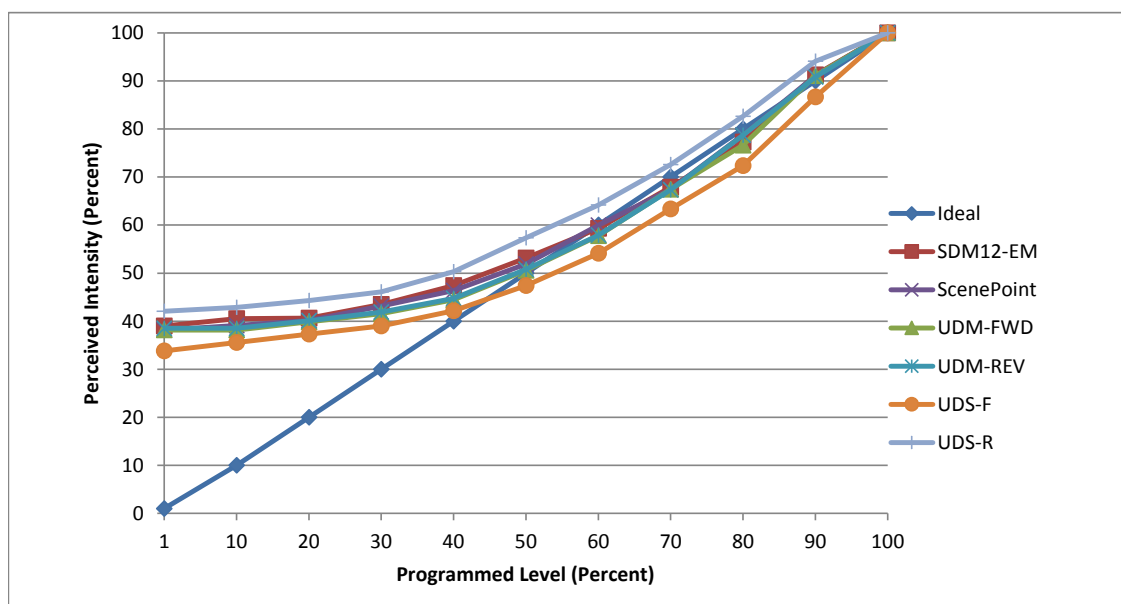


Manufacturer Element
Model E3S LF-LH WD 4 D S/E3SLB-OW
Description 4 inch downlights
Driver L.T.F. DA18W400C2545-3001-1 (included in unit)
Nominal Power (W) 18
Dimming Control Forward and Reverse Phase
Product Range Element LED Round-Square
Test Date 3-Jul-19

Dimmer Tested Against:	SDM12-EM	ScenePoint	UDM-FWD	UDM-REV	UDS-F	UDS-R
Commercial Pass/Fail	Pass	Pass	Pass	Pass	Pass	Pass
Residential Pass/Fail *	Fail	Fail	Fail	Fail	Fail	Fail
Best-Fit Power Profile:						
Minimum ON	35	35	33	35	35	34
Maximum ON	85	85.3	83.5	85	87.5	80
Adjust	100	100	100	100	100	100
Light Output Range (vs. non-dimmed)						
Maximum (Perceived), 120V	95.4%	94.1%	94.4%	94.7%	95.8%	95.4%
Minimum (Perceived)	37.2%	35.9%	36.0%	36.5%	32.4%	40.1%
Minimum (Measured)	13.8%	12.9%	13.0%	13.3%	10.5%	16.1%

Linearity Curves (Best-fit Power Profile Applied):



jwm

Observations: Test performed in three unit configuration.
 Color temperature shows great orange bias at lower intensities.
 * Rejected for residential use because of narrow non-flickering dim range.