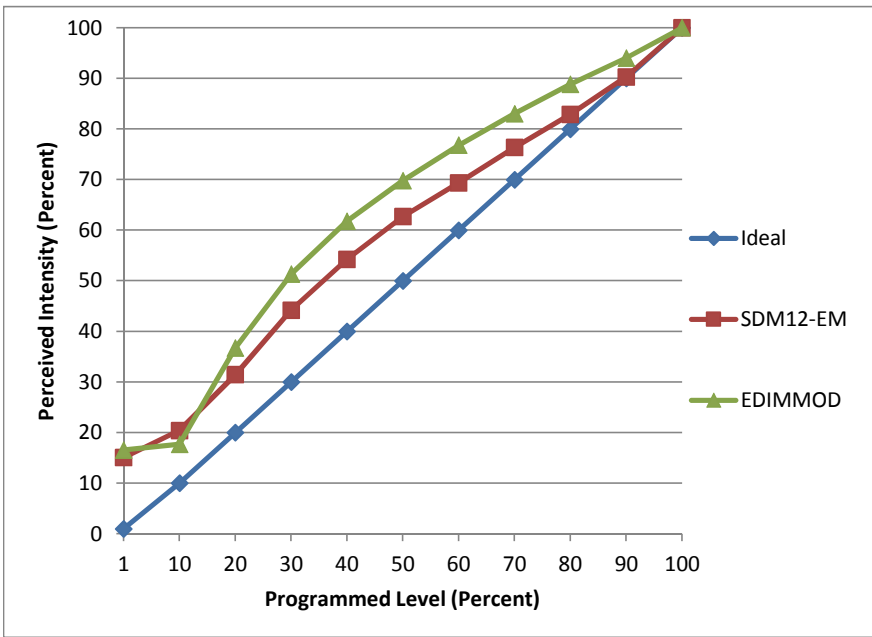


Manufacturer Eiko
Model LED8WBR20/827K-DIM-G4
Description BR30 Lamp
Driver integrated
Nominal Power (W) 8
Dimming Control forward- and reverse-phase
Product Range LITESPANLED
Test Date 1/5/2015

Dimmer Tested Against:	SDM12-EM	EDIMMOD	
Pass/Fail	Pass	Pass	
Best-Fit Power Profile:			
Minimum ON	0	0	
Maximum ON	92	88	
Adjust	100	100	
Light Output Range (vs. non-dimmed)			
Maximum (Perceived)	95.4%	95.1%	
Minimum (Perceived)	14.4%	15.7%	
Minimum (Measured)	2.1%	2.5%	

Linearity Curves (Best-fit Power Profile Applied):



Observations:

ScenePoint 1.5 Minimum On. No Minimum Load issue.