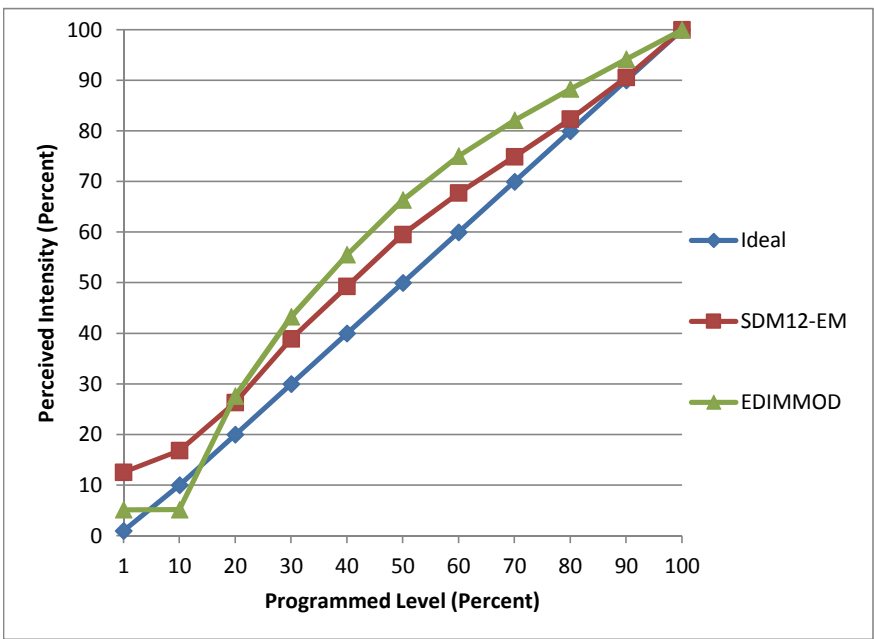


Manufacturer Eiko
Model LED11WBR30/827K-DIM-G5
Description BR30 Lamp
Driver integrated
Nominal Power (W) 11
Dimming Control forward- and reverse-phase
Product Range LITESPANLED
Test Date 1/5/2015

Dimmer Tested Against:	SDM12-EM	EDIMMOD	
Pass/Fail	Pass	Pass	
Best-Fit Power Profile:			
Minimum ON	2	0	
Maximum ON	89	71	
Adjust	100	100	
Light Output Range (vs. non-dimmed)			
Maximum (Perceived)	95.2%	95.0%	
Minimum (Perceived)	12.0%	4.9%	
Minimum (Measured)	1.4%	0.2%	

Linearity Curves (Best-fit Power Profile Applied):



Observations:

ScenePoint 2.5 Minimum On. No Minimum Load issue.