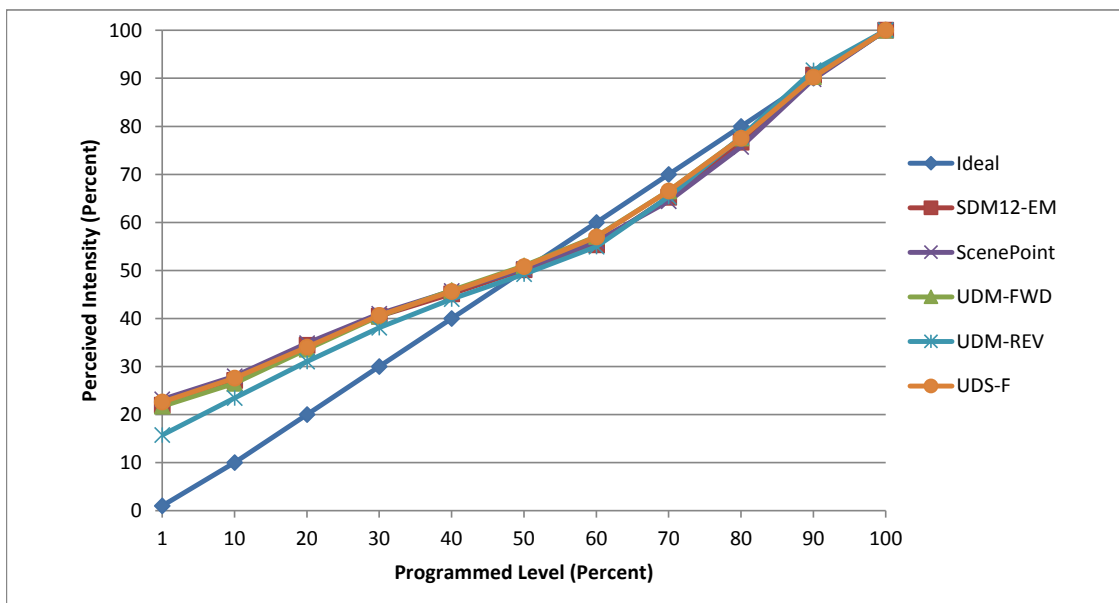


**Manufacturer** Ecosmart  
**Model** B7PR38P120ESD01  
**Description** 1200 L 3000 K PAR38 bulb  
**Driver** built-in  
**Nominal Power (W)** 14.5  
**Dimming Control** Forward and Reverse Phase  
**Product Range** Bright White LED  
**Test Date** 14-Jan-19

Dimmer Tested Against:	SDM12-EM	ScenePoint	UDM-FWD	UDM-REV	UDS-F	UDS-R
Pass/Fail	Pass	Pass	Pass	Pass	Pass	Fail
<b>Best-Fit Power Profile:</b>						
Minimum ON	12	14	12	11	16	-
Maximum ON	63	66	65.3	62	68.3	-
Adjust	50	50	50	50	50	-
<b>Light Output Range (vs. non-dimmed)</b>						
Maximum (Perceived), 120V	95.3%	95.0%	94.9%	94.9%	94.7%	-
Minimum (Perceived)	21.0%	22.0%	20.6%	14.9%	21.4%	-
Minimum (Measured)	4.4%	4.8%	4.3%	2.2%	4.6%	-

Linearity Curves (Best-fit Power Profile Applied):



jwm

**Observations:** Test performed in 4 unit configuration.  
 UDS Reverse Phase failed because of observed major dim step at about 50%.