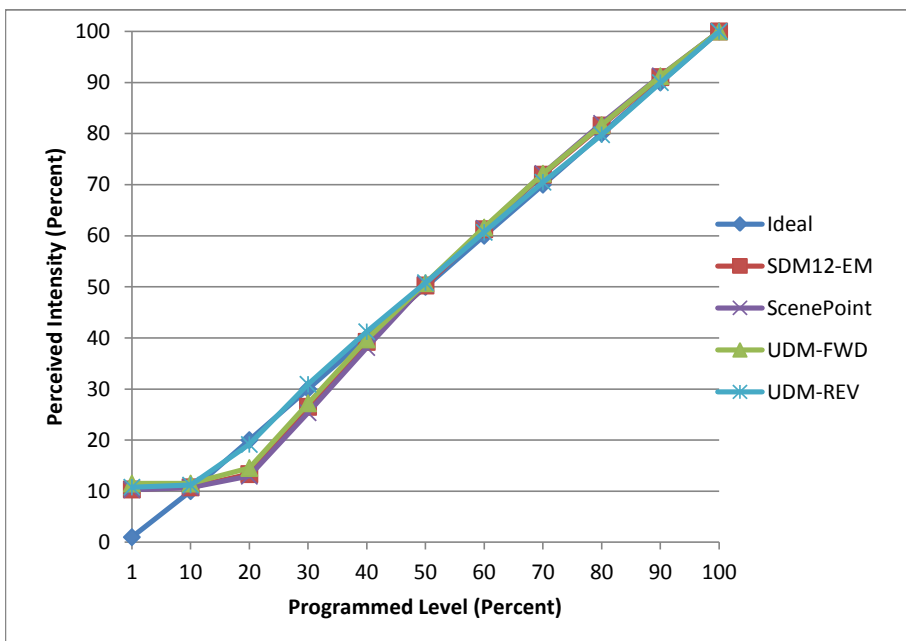


Manufacturer Eaton
Model LD6A20D010TE
Description 6 in Downlight
Driver Lutron LTEA4U1UKS-HA065
Nominal Power (W) 29
Dimming Control Forward and Reverse
Product Range -
Test Date 10/13/2016

11/2/2016

Dimmer Tested Against:	SDM12-EM	Scenepoint	UDM-FWD	UDM-REV
Pass/Fail	Pass	Pass	Pass	Pass
Best-Fit Power Profile:				
Minimum ON	6	6	7	12
Maximum ON	83	84	83	82
Adjust	-40	-45	-40	-15
Light Output Range (vs. non-dimmed)				
Maximum (Perceived)	95.4%	95.3%	94.9%	95.7%
Minimum (Perceived)	9.9%	9.8%	10.9%	10.3%
Minimum (Measured)	1.0%	1.0%	1.2%	1.1%

Linearity Curves (Best-fit Power Profile Applied):



Observations:

bgk