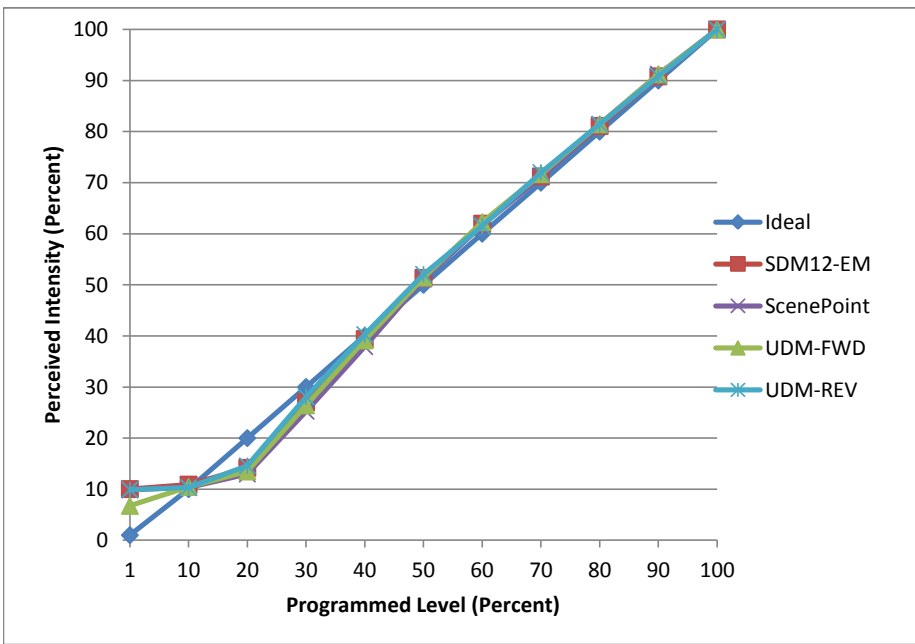


Manufacturer Eaton
Model LD6A20D010TE
Description 6 in Downlight
Driver Lutron LTEA4U1UKS-EA035
Nominal Power (W) 22
Dimming Control Forward and Reverse
Product Range -
Test Date 10/14/2016 11/2/2016

Dimmer Tested Against:	SDM12-EM	Scenepoint	UDM-FWD	UDM-REV
Pass/Fail	Pass	Pass	Pass	Pass
Best-Fit Power Profile:				
Minimum ON	7	6	6	6
Maximum ON	83	85	84	82
Adjust	-45	-50	-50	-35
Light Output Range (vs. non-dimmed)				
Maximum (Perceived)	95.0%	96.3%	95.4%	95.8%
Minimum (Perceived)	9.5%	9.5%	6.4%	9.5%
Minimum (Measured)	0.9%	0.9%	0.4%	0.9%

Linearity Curves (Best-fit Power Profile Applied):



Observations:

bgk