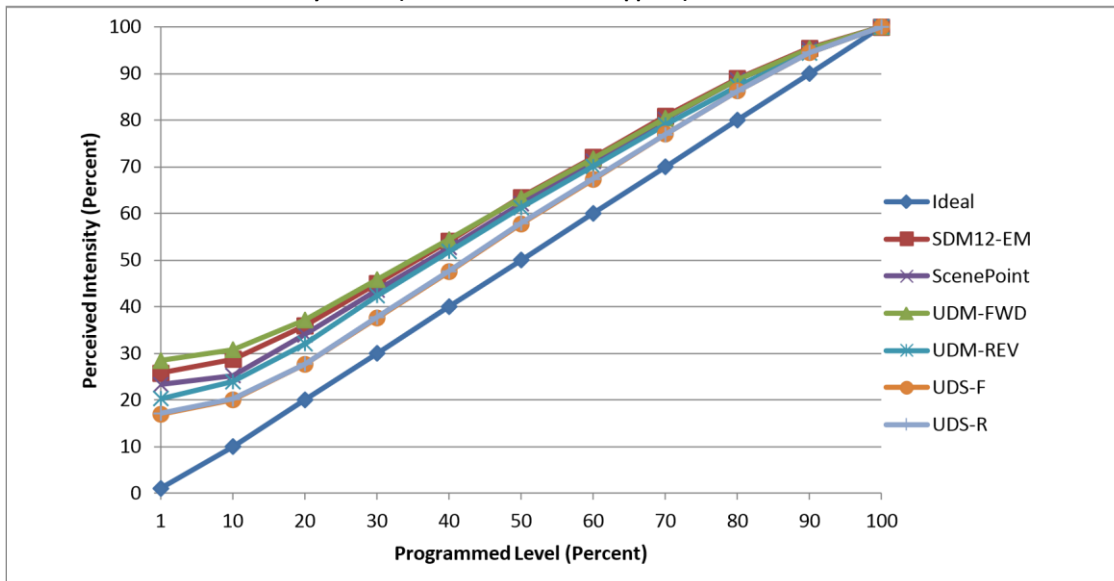




Manufacturer DMF Light
Model DRD2M10930
Description 1000 lumen 4 in.
 puck light
Driver built-in
Nominal Power (W) 14.7
Dimming Control Forward and Reverse Phase
Product Range DRD2M
Test Date 30-Apr-18

Dimmer Tested Against:	SDM12-EM	SCP	UDM-FWD	UDM-REV	UDS-F	UDS-R
Pass/Fail	Pass	Pass	Pass	Pass	Pass	Pass
Best-Fit Power Profile:						
Minimum ON	3	3	4	3	3	3
Maximum ON	69	71	71	71	75	75
Adjust	100	100	100	100	100	100
Light Output Range (vs. non-dimmed)						
Maximum (Perceived), 120V	95.0%	94.9%	95.1%	95.0%	94.9%	95.0%
Minimum (Perceived)	24.4%	22.1%	27.0%	19.3%	16.1%	16.2%
Minimum (Measured)	6.0%	4.9%	7.3%	3.7%	2.6%	2.6%

Linearity Curves (Best-fit Power Profile Applied):



Observations: Inconsistent on delay when tested with multiple fixtures if initially turned on to low levels. Tested in one and four fixture configurations. Results given are for four fixture set up.

jwm