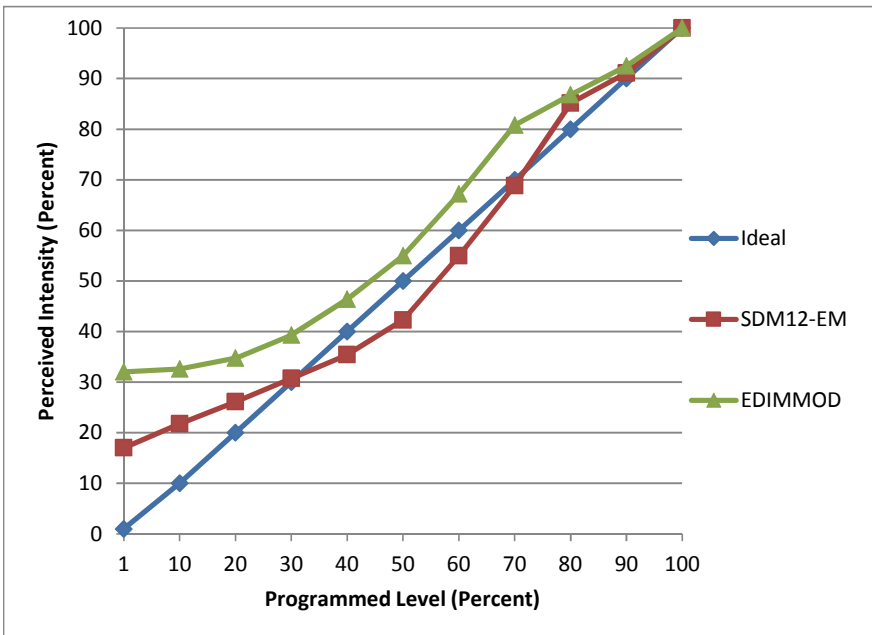


Manufacturer Contrast Lighting
Model ECO2NWL300 housing; ECO2L3D04BRAN280W trim
Description 2" Downlight
Driver Magtech M9-U36-0250
Nominal Power (W) 11
Dimming Control forward- and reverse-phase
Product Range
Test Date 1/6/2015

Dimmer Tested Against:	SDM12-EM	EDIMMOD	
Pass/Fail	Pass	Pass	
Best-Fit Power Profile:			
Minimum ON	7	14	
Maximum ON	92	89	
Adjust	80	100	
Light Output Range (vs. non-dimmed)			
Maximum (Perceived)	95.2%	95.5%	
Minimum (Perceived)	16.2%	30.6%	
Minimum (Measured)	2.6%	9.3%	

Linearity Curves (Best-fit Power Profile Applied):



Observations:

ELV: directionally dependent. Without the relatively high Minimum On, performance is better in descending order (starting full on and dimming), but lights don't start from off until 30-40% programmed dimming.
 ScenPoint: Minimum Load issue with single fixture - more than one fixture required to meet minimum load requirement (how many is undetermined, only one sample was provided.)