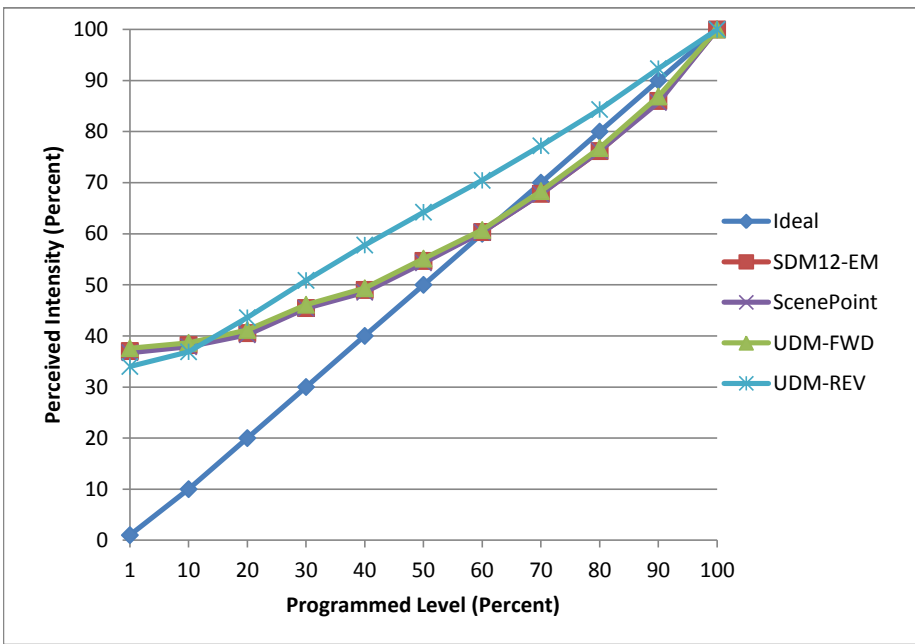


Manufacturer Commercial Electric
Model CDLPS150R10
Description 5in Retrofit
Driver Integrated
Nominal Power (W) 7
Dimming Control Forward and Reverse
Product Range -
Test Date 3/6/2017

Dimmer Tested Against:	SDM12-EM	Scenepoint	UDM-FWD	UDM-REV
Pass/Fail	Pass	Pass	Pass	Pass
Best-Fit Power Profile:				
Minimum ON	5	5	5	3
Maximum ON	79	80	78	89
Adjust	100	100	100	100
Light Output Range (vs. non-dimmed)				
Maximum (Perceived)	95.1%	95.4%	95.4%	95.2%
Minimum (Perceived)	35.2%	35.0%	35.9%	32.4%
Minimum (Measured)	12.4%	12.3%	12.9%	10.5%

Linearity Curves (Best-fit Power Profile Applied):



Observations:

Minimum Load issue on scenepoint

bgk