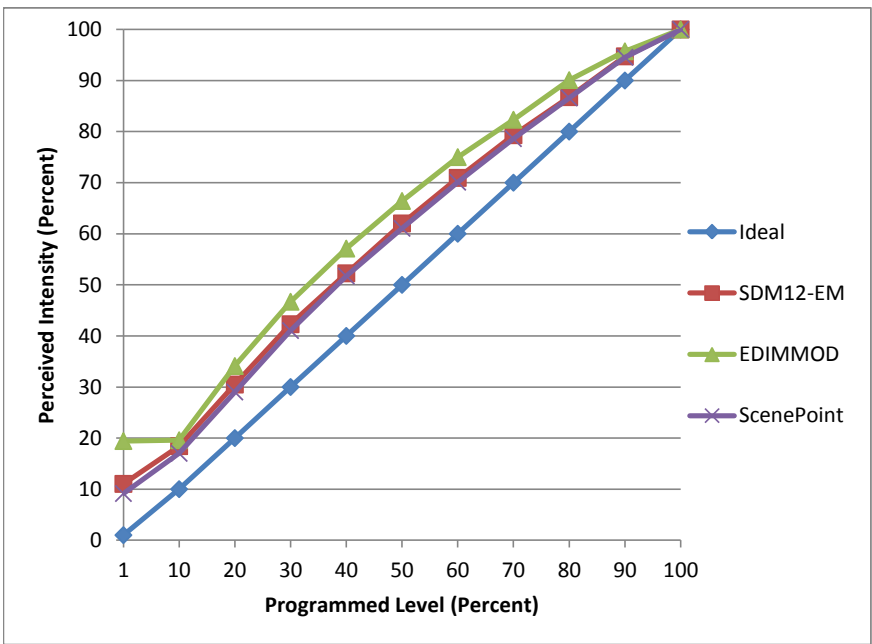


Manufacturer Creative Systems Lighting
Model EDL-ADJ-27-4
Description LED Downlight, 3", Adjustable
Driver undisclosed
Nominal Power (W) 30
Dimming Control forward-phase, reverse-phase, 0-10V (see other)
Product Range Eco-Downlight LED
Test Date 3/9/2016

Dimmer Tested Against:	SDM12-EM	EDIMMOD	ScenePoint
Pass/Fail	Pass	Pass	Pass
Best-Fit Power Profile:			
Minimum ON	1	0	1
Maximum ON	75	70	75
Adjust	100	100	100
Light Output Range (vs. non-dimmed)			
Maximum (Perceived)	95.5%	95.7%	95.4%
Minimum (Perceived)	10.5%	18.6%	8.7%
Minimum (Measured)	1.1%	3.5%	0.8%

Linearity Curves (Best-fit Power Profile Applied):



Observations: