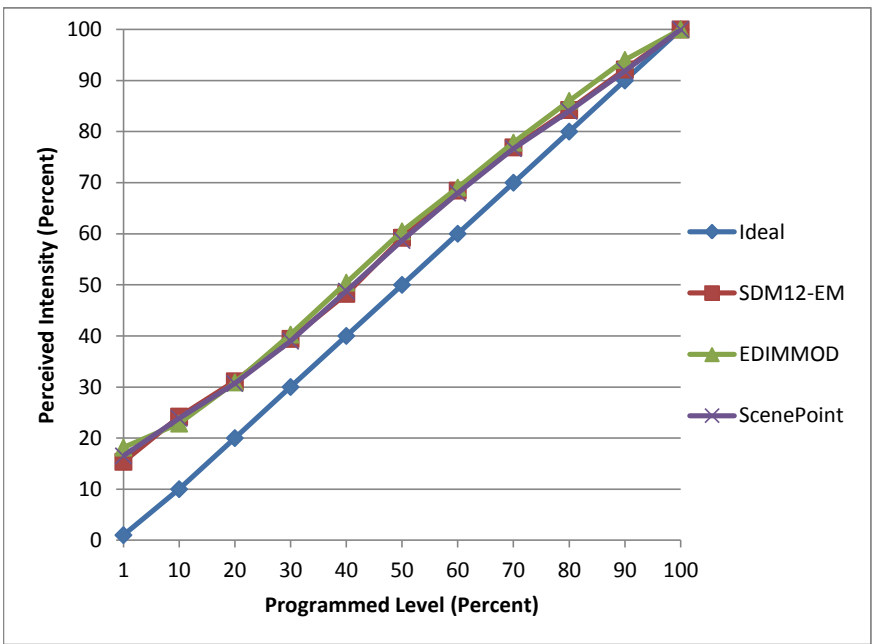


**Manufacturer** Cree  
**Model** BBR30-06527FLF-12DE26-4U100  
**Description** BR30 9w LED Flood, 2700k  
**Driver** Integrated  
**Nominal Power (W)** 9W  
**Dimming Control** Forward and Reverse  
**Product Range**  
**Test Date** 3/31/2016

Dimmer Tested Against:	SDM12-EM	EDIMMOD	ScenePoint
Pass/Fail	Pass	Pass	Pass
<b>Best-Fit Power Profile:</b>			
Minimum ON	1.5	0.5	2.5
Maximum ON	90	81	91
Adjust	50	100	50
<b>Light Output Range (vs. non-dimmed)</b>			
Maximum (Perceived)	95.1%	95.1%	95.3%
Minimum (Perceived)	14.6%	17.2%	15.7%
Minimum (Measured)	2.1%	3.0%	2.5%

**Linearity Curves (Best-fit Power Profile Applied):**



**Observations:**

Noticable Humming on forward phase diming

bgk