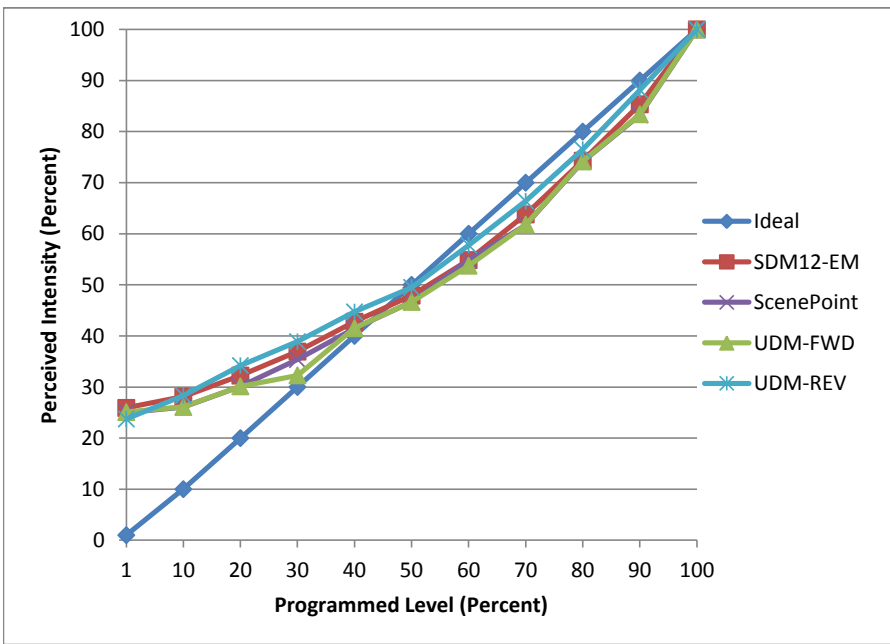


Manufacturer Aurora
Model AU-DGU107 30
Description GU10 Lamp
Driver Intergated
Nominal Power (W) 7
Dimming Control Forward and Reverse
Product Range -
Test Date 6/27/2016

| Dimmer Tested Against: | SDM12-EM | ScenePoint | UDM-FWD | UDM-REV |
|--|----------|------------|---------|---------|
| Pass/Fail | Pass | Pass | Pass | Pass |
| Best-Fit Power Profile: | | | | |
| Minimum ON | 10 | 10 | 10 | 13 |
| Maximum ON | 84 | 85 | 85 | 88 |
| Adjust | 100 | 100 | 100 | 50 |
| Light Output Range (vs. non-dimmed) | | | | |
| Maximum (Perceived) | 95.8% | 95.8% | 95.8% | 94.7% |
| Minimum (Perceived) | 24.8% | 24.0% | 24.0% | 22.5% |
| Minimum (Measured) | 6.2% | 5.7% | 5.8% | 5.0% |

Linearity Curves (Best-fit Power Profile Applied):



Observations:

Transistional Jumping

bgk