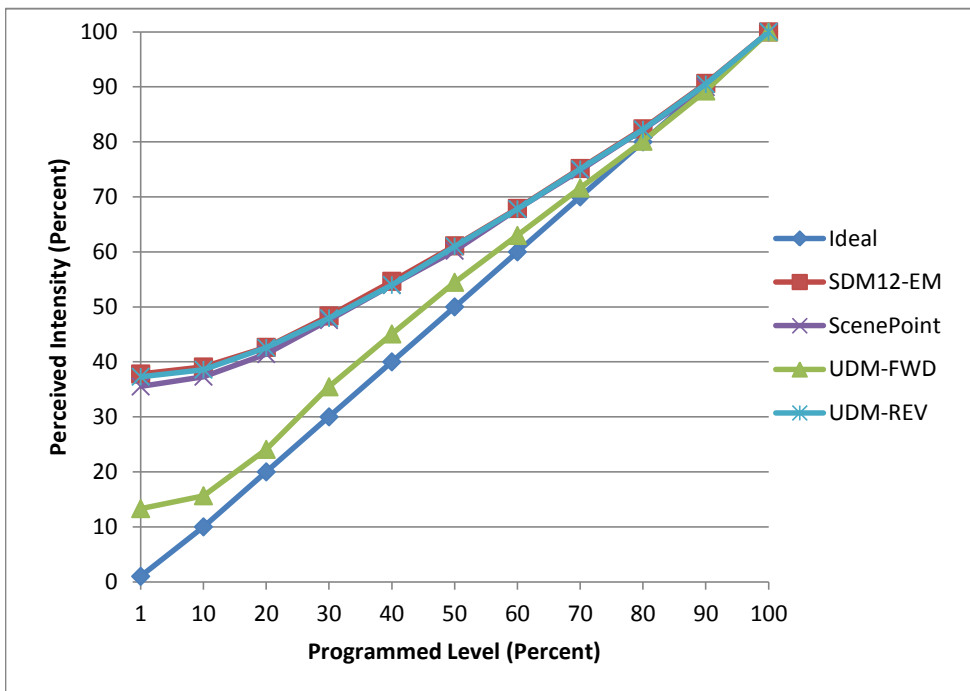


Manufacturer Archipelago
Model LTCA12C32527K1
Description Flame tip Candelabra
Driver Integrated
Nominal Power (W) 3.5/ per light. Tested 6 at a time
Dimming Control Forward and Reverse
Product Range -
Test Date 9/1/2016

Dimmer Tested Against:	SDM12-EM	Scenepoint	UDM-FWD	UDM-REV
Pass/Fail	Pass	Pass	Pass	Pass
Best-Fit Power Profile:				
Minimum ON	20	20	13	20
Maximum ON	80	82	83	80
Adjust	100	100	100	100
Light Output Range (vs. non-dimmed)				
Maximum (Perceived)	95.7%	95.5%	95.5%	95.6%
Minimum (Perceived)	36.2%	33.9%	12.7%	35.7%
Minimum (Measured)	13.1%	11.5%	1.6%	12.7%

Linearity Curves (Best-fit Power Profile Applied):



Observations:

SDM Minimum on is set at current level due to flicker noticed, turns on at 1
 ScenePoint and UDM-REV turns on at 10 and stops flicker at 20
 UDM-FWD on at 10 no flicker at 13
 bgk