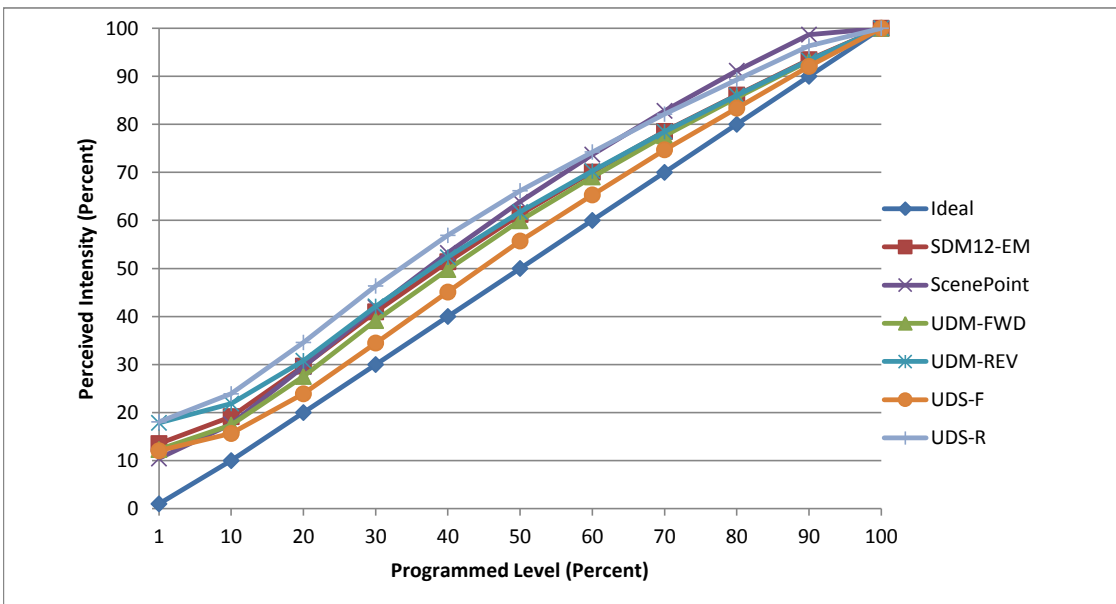


Manufacturer American Lighting
Model SPTL-WW
Description Tape Light
Driver KV-24030-TDL
Nominal Power (W) 30
Dimming Control Forward and Reverse Phase
Product Range -
Test Date 10/6/2017

Dimmer Tested Against:	SDM12-EM	SCP	UDM-FWD	UDM-REV	UDS-F	UDS-R
Pass/Fail	Pass	Pass	Pass	Pass	Pass	Pass
Best-Fit Power Profile:						
Minimum ON	1	1	1	2	2	1
Maximum ON	50	64	52	52	56	45
Adjust	100	100	100	100	100	100
Light Output Range (vs. non-dimmed)						
Maximum (Perceived), 120V	95.2%	95.0%	95.3%	95.3%	95.0%	95.3%
Minimum (Perceived)	12.9%	9.9%	11.7%	17.0%	11.5%	17.2%
Minimum (Measured)	1.7%	1.0%	1.4%	2.9%	1.3%	3.0%

Linearity Curves (Best-fit Power Profile Applied):



Observations:

bgk