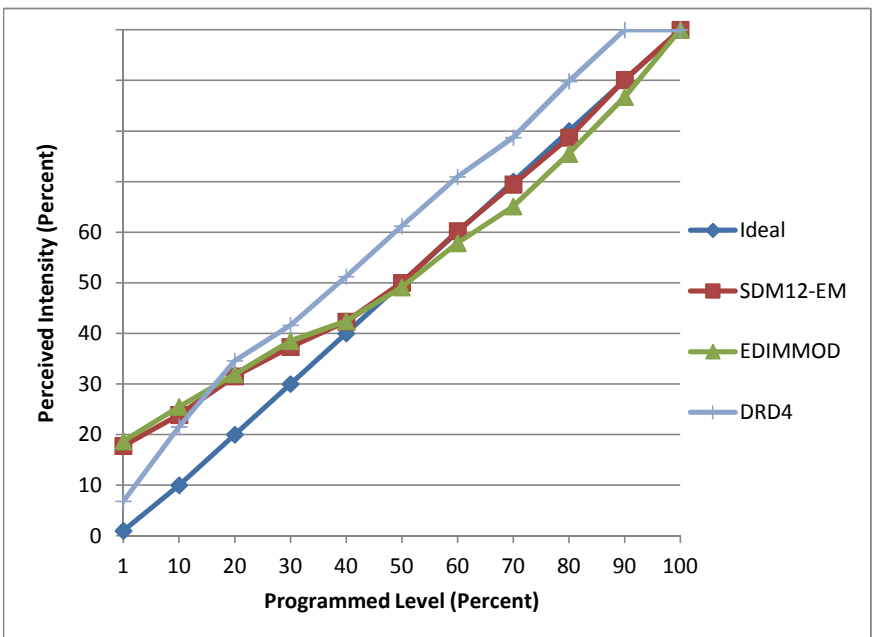


**Manufacturer** American Lighting  
**Model** EP4-E26-30-DB  
**Description** 4" LED Recessed  
**Driver** Integral  
**Nominal Power (W)** 7.6  
**Dimming Control** Forward- and reverse-phase  
**Product Range** E-PRO LED  
**Test Date** 8/21/2014

Dimmer Tested Against:	SDM12-EM	EDIMMOD	DRD4
Pass/Fail	Pass	Pass	Pass
Best-Fit Power Profile:			Standard
Minimum ON	3.5	3.5	
Maximum ON	83	80	
Adjust	70	65	
Light Output Range (vs. non-dimmed)			
Maximum (Perceived)	95.8%	99.9%	100.0%
Minimum (Perceived)	17.0%	18.7%	6.8%
Minimum (Measured)	2.9%	3.5%	0.5%

Linearity Curves (Best-fit Power Profile Applied):



**Observations:**

DRD4 minimum on level 4% (no trim)  
 ScenePoint Dimmer requires more than one fixture per load (only one tested, some flicker)