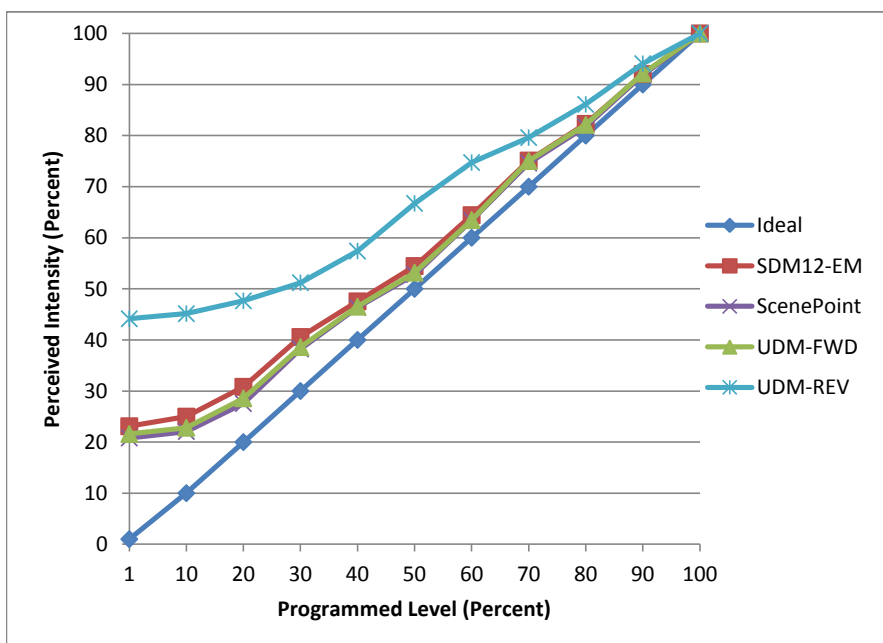


Manufacturer American Lighting
Model E6-E26-30-WH
Description 6 in Recessed
Driver Integrated
Nominal Power (W) 14.2
Dimming Control Forward and Reverse
Product Range -
Test Date 6/29/2016

Dimmer Tested Against:	SDM12-EM	ScenePoint	UDM-FWD	UDM-REV
Pass/Fail	Pass	Pass	Pass	Pass
Best-Fit Power Profile:				
Minimum ON	5	5	5	10
Maximum ON	41	42	43	41
Adjust	100	100	100	100
Light Output Range (vs. non-dimmed)				
Maximum (Perceived)	95.2%	95.2%	95.3%	95.1%
Minimum (Perceived)	22.0%	19.8%	20.6%	42.0%
Minimum (Measured)	4.8%	3.9%	4.2%	17.6%

Linearity Curves (Best-fit Power Profile Applied):



Observations:

Minimum Load Issue

bgk