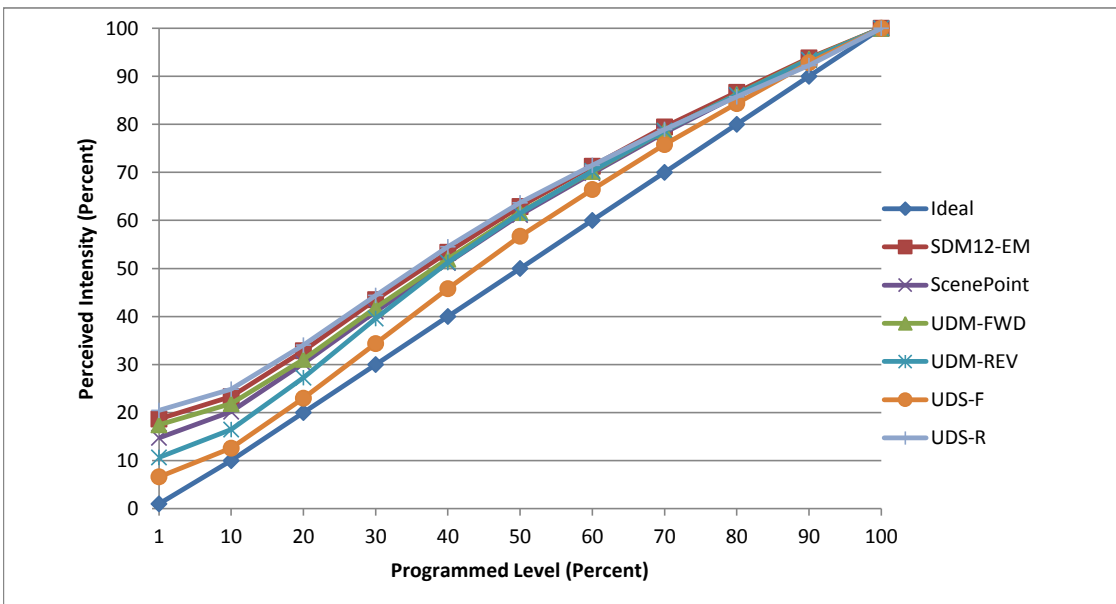


Manufacturer American Lighting
Model SPTL-WW
Description Tape Light
Driver KV-24060-TDL
Nominal Power (W) 60
Dimming Control Forward and Reverse Phase
Product Range -
Test Date 10/4/2017

Dimmer Tested Against:	SDM12-EM	SCP	UDM-FWD	UDM-REV	UDS-F	UDS-R
Pass/Fail	Pass	Pass	Pass	Pass	Pass	Pass
Best-Fit Power Profile:						
Minimum ON	1	1	1	1	1	1
Maximum ON	40	41	42	45	50	37
Adjust	100	100	100	100	100	100
Light Output Range (vs. non-dimmed)						
Maximum (Perceived), 120V	95.7%	95.3%	95.1%	95.4%	95.1%	95.1%
Minimum (Perceived)	17.9%	14.0%	16.6%	10.2%	6.3%	19.4%
Minimum (Measured)	3.2%	2.0%	2.8%	1.0%	0.4%	3.8%

Linearity Curves (Best-fit Power Profile Applied):



Observations:

bgk