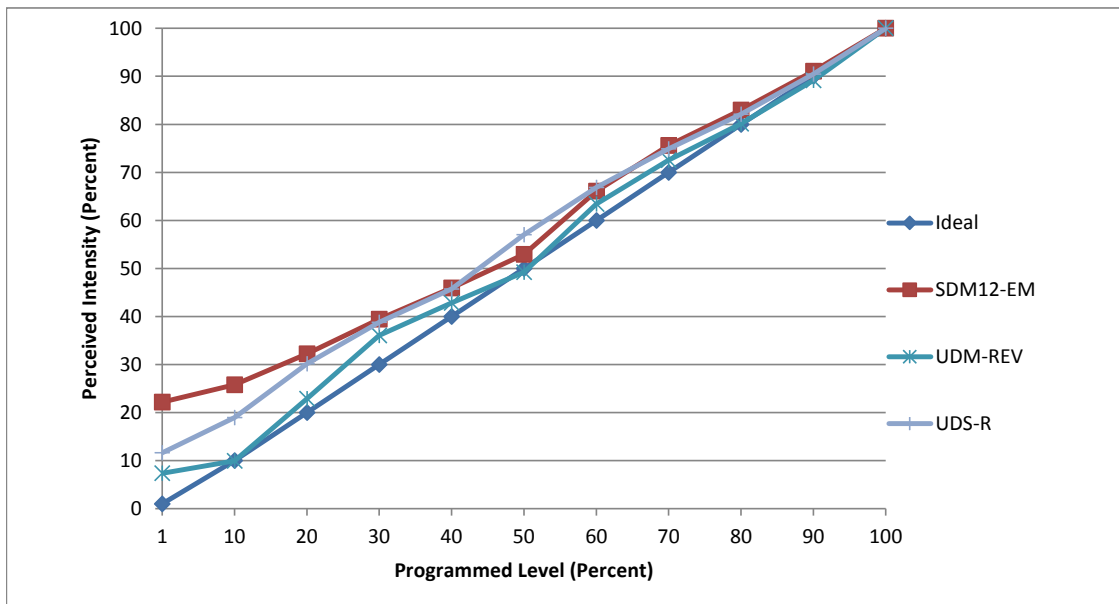


Manufacturer American Lighting
Model EM6-30-AZ
Description 6 in 300k Downlights
Driver built-in
Nominal Power (W) unspecified
Dimming Control Forward and Reverse Phase
Product Range Epiq
Test Date 20 November, 2018

Dimmer Tested Against:	SDM12-EM	SCP	UDM-FWD	UDM-REV	UDS-F	UDS-R
Pass/Fail	Pass	Fail	Fail	Pass	Fail	Pass
Best-Fit Power Profile:						
Minimum ON	5	-	-	3	-	3
Maximum ON	92	-	-	92.5	-	90.5
Adjust	100	-	-	100	-	100
Light Output Range (vs. non-dimmed)						
Maximum (Perceived), 120V	94.9%	95.0%	95.0%	95.4%	95.0%	95.3%
Minimum (Perceived)	21.0%	1.0%	1.0%	7.0%	1.0%	11.1%
Minimum (Measured)	4.4%	0.0%	0.0%	0.5%	0.0%	1.2%

Linearity Curves (Best-fit Power Profile Applied):



Observations: Tests done in three unit configuration.
 Dimming on most forward-phase dimmers failed because of excessive flickering.
 Dim curves varied slightly with multiple tests of the same settings for each set of hardware.

jwm