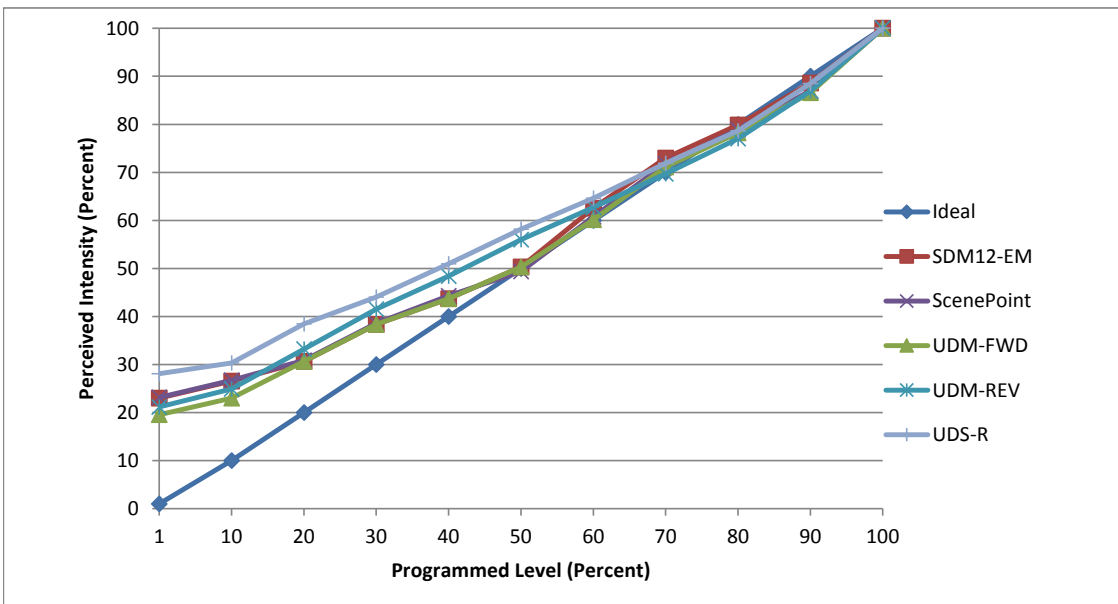


Manufacturer American Lighting
Model E6-RE-30-WH
Description 6 in 3000k downlights
Driver included
Nominal Power (W) unspecified
Dimming Control Forward and Reverse Phase
Product Range Epiq
Test Date 26 November, 2018

Dimmer Tested Against:	SDM12-EM	SCP	UDM-FWD	UDM-REV	UDS-F	UDS-R
Pass/Fail	Pass	Pass	Pass	Pass	Fail	Pass
Best-Fit Power Profile:						
Minimum ON	7	8.5	7	6.5	-	5.5
Maximum ON	93.2	93.5	93.5	96.4	-	97.4
Adjust	100	100	100	100	-	100
Light Output Range (vs. non-dimmed)						
Maximum (Perceived), 120V	95.7%	95.0%	95.5%	88.2%	-	90.0%
Minimum (Perceived)	22.0%	22.0%	18.7%	18.7%	-	25.3%
Minimum (Measured)	4.9%	4.8%	3.5%	3.5%	-	6.4%

Linearity Curves (Best-fit Power Profile Applied):



Observations: Test done in three unit configuration.
 Forward-phase dimmers showed stepping while ramping/fading.
 Reverse-phase dimmers showed a shelf on the high end; Max On was set to cut out the shelf.
 UDS Forward-phase failed because of excessive flickering.

jwm