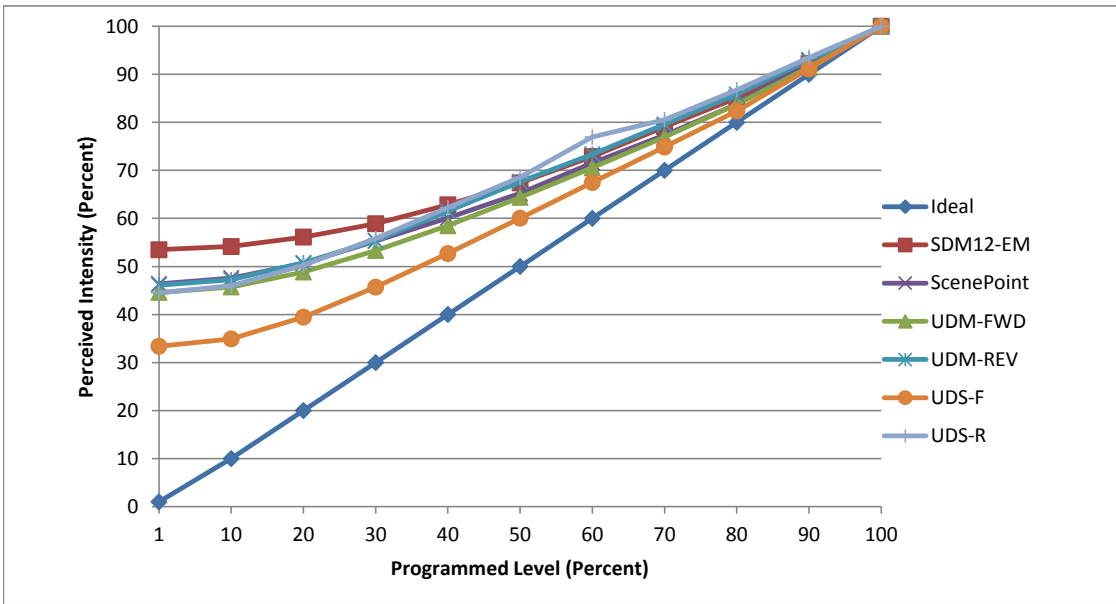


Manufacturer Aamsco Lighting
Model LED 8W T10HYBRID DIM
Description T10
Driver Integrated
Nominal Power (W) 8
Dimming Control Forward and Reverse Phase
Product Range -
Test Date 1/3/2018

Dimmer Tested Against:	SDM12-EM	SCP	UDM-FWD	UDM-REV	UDS-F	UDS-R
Pass/Fail	Pass	Pass	Pass	Pass	Pass	Pass
Best-Fit Power Profile:						
Minimum ON	27	25	23	23	23	17
Maximum ON	71	79	79	76	85	69
Adjust	100	100	100	100	100	100
Light Output Range (vs. non-dimmed)						
Maximum (Perceived), 120V	95.2%	95.2%	95.3%	95.1%	95.2%	95.1%
Minimum (Perceived)	50.9%	44.1%	42.5%	43.9%	31.8%	42.3%
Minimum (Measured)	25.9%	19.5%	18.1%	19.2%	10.1%	17.9%

Linearity Curves (Best-fit Power Profile Applied):



Observations:

bgk