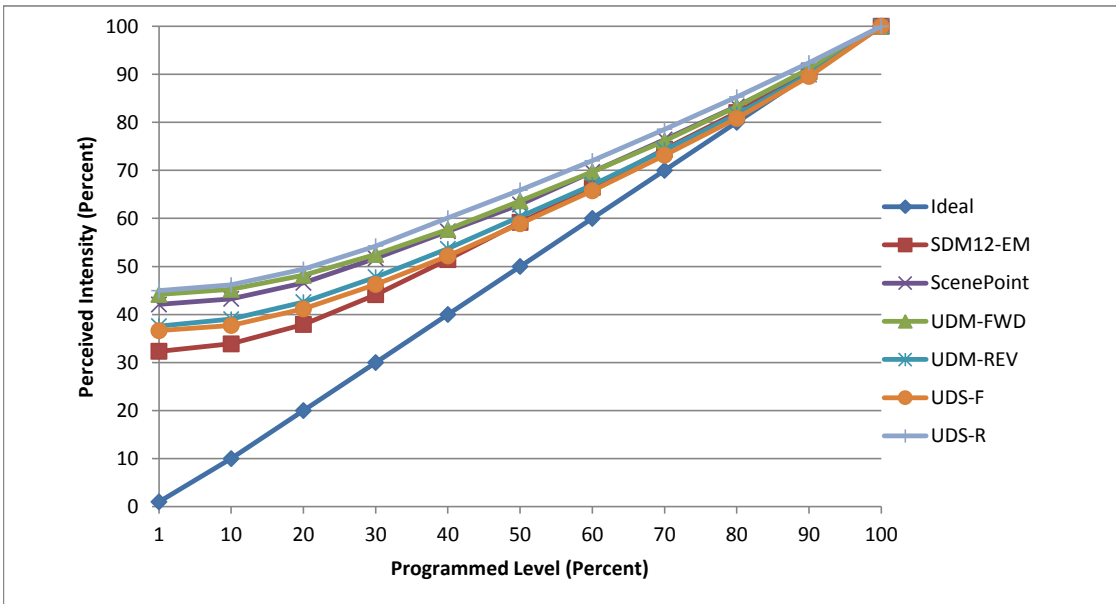


Manufacturer Aamsco
Model LED 2W T8HYBRID DIM
Description T8
Driver Integrated
Nominal Power (W) 2
Dimming Control Forward and Reverse Phase
Product Range -
Test Date 1/3/2017

| Dimmer Tested Against: | SDM12-EM | SCP | UDM-FWD | UDM-REV | UDS-F | UDS-R |
|--|----------|-------|---------|---------|-------|-------|
| Pass/Fail | Pass | Pass | Pass | Pass | Pass | Pass |
| Best-Fit Power Profile: | | | | | | |
| Minimum ON | 17 | 23 | 23 | 23 | 25 | 20 |
| Maximum ON | 74 | 75 | 77 | 78 | 83 | 71 |
| Adjust | 100 | 100 | 100 | 100 | 100 | 100 |
| Light Output Range (vs. non-dimmed) | | | | | | |
| Maximum (Perceived), 120V | 95.1% | 95.3% | 95.3% | 95.2% | 95.6% | 95.2% |
| Minimum (Perceived) | 30.8% | 40.1% | 42.1% | 35.8% | 35.0% | 42.8% |
| Minimum (Measured) | 9.5% | 16.1% | 17.7% | 12.8% | 12.3% | 18.3% |

Linearity Curves (Best-fit Power Profile Applied):



Observations:

bgk